



DRAWERS

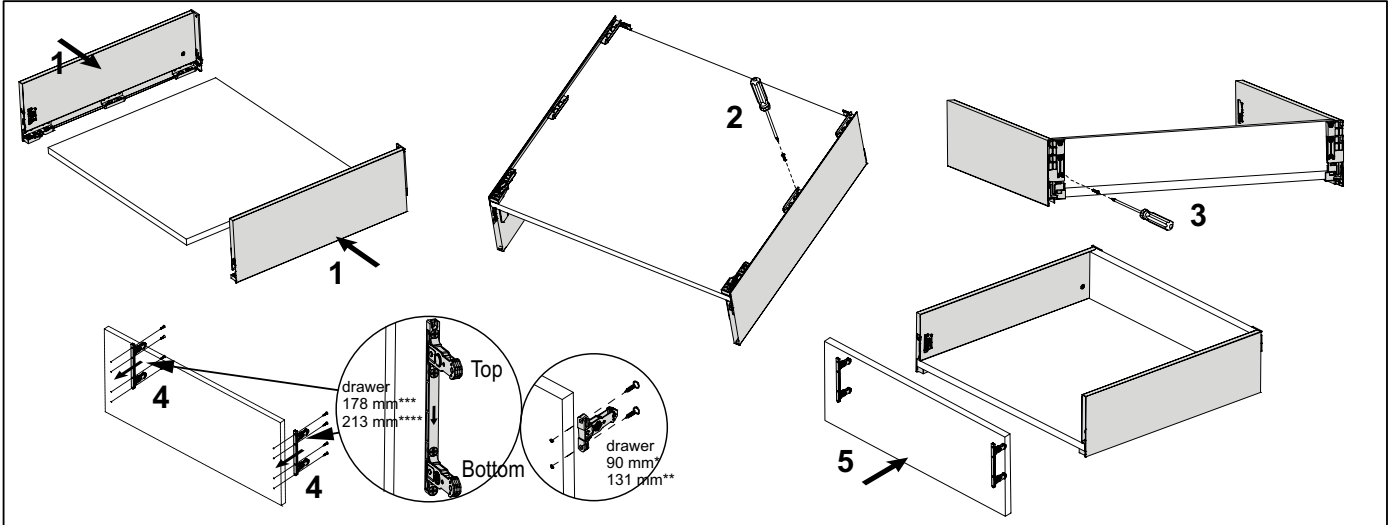
SEVROLLBOX SLIM 3D – Height 90*/131**/178***/213****mm

ATTENTION: * dimensions for drawers 90 mm / ** dimensions for drawers 131 mm / *** dimensions for drawers 178 mm / **** dimensions for drawers 213 mm

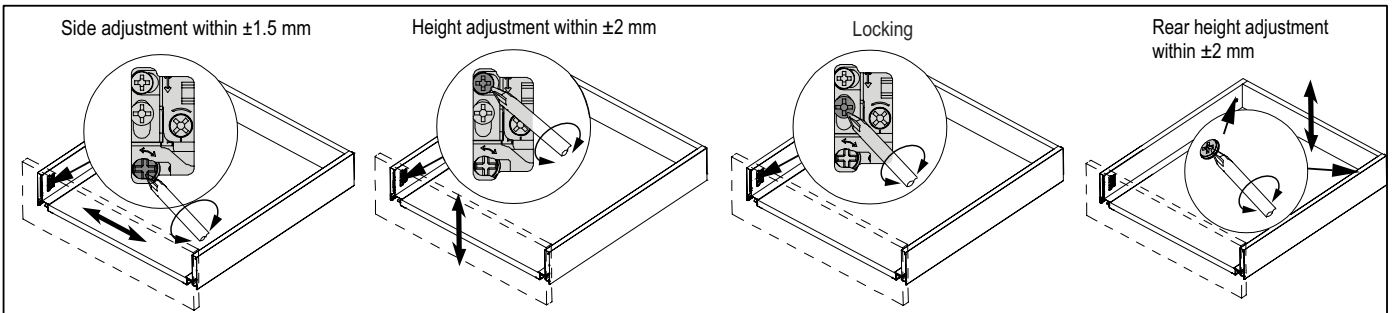
Components	Cutting dimensions of 16 mm MDF	
<p>ATTENTION! screws are not included</p>	<p>B Back panel</p>	<p>A Base panel</p>
		<p>NL : 270 [mm] 300 350 400 450 500 550</p> <p>A – Base panel B – Back panel</p> <p>LW – internal cabin width NL – nominal length of drawer</p>
Drawer slide positioning		Installation measurement
<p>Minimal depth of cabinet: (NL + 3 mm)</p> <p>Drawer front installed</p> <p>Warning: in drawers with recessed fronts the slides should be positioned further back by the thickness of the drawer front!</p>		<p>D - Positioning of drawer front</p>
Mounting dimensions for drawer front panel		
<p>D - Positioning of drawer front</p> <p>Drawer front 90 mm*</p> <p>Drawer front 131mm**</p> <p>Drawer front 178 mm***</p> <p>Drawer front 213 mm****</p>		
Mounting dimensions of back panel		
<p>Back panel for 90 mm sides*</p> <p>Back panel for 131 mm sides**</p> <p>Back panel for 178 mm sides***</p> <p>Back panel for 213 mm sides****</p>		



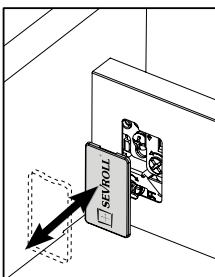
Drawer assembly



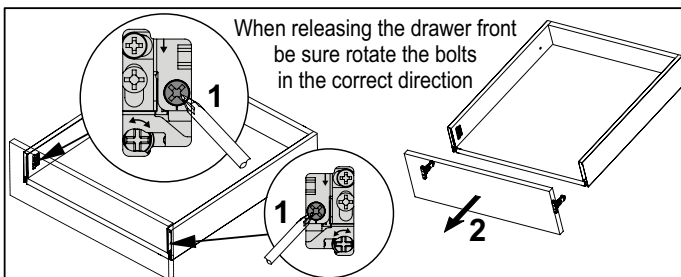
Drawer front regulation



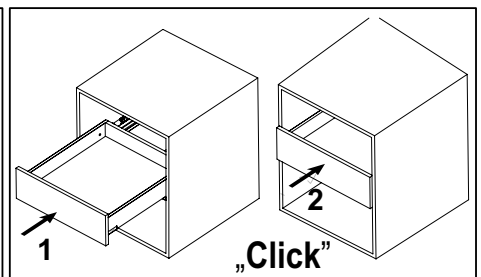
Cover insertion / removal



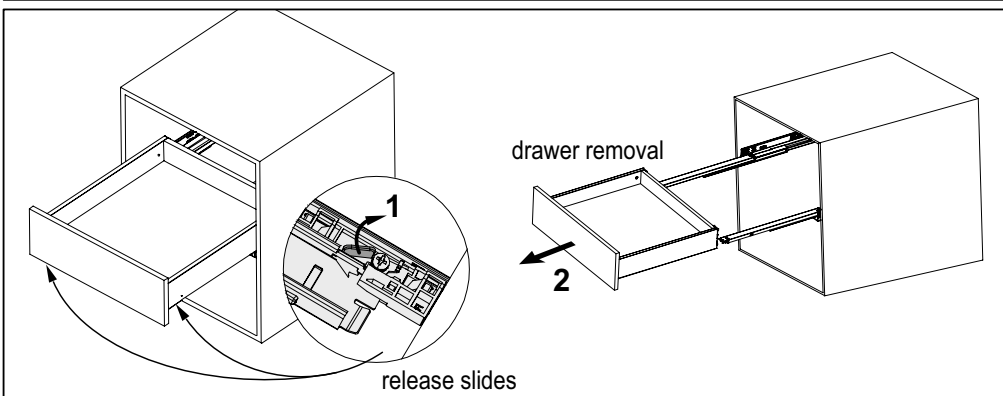
Drawer front panel removal



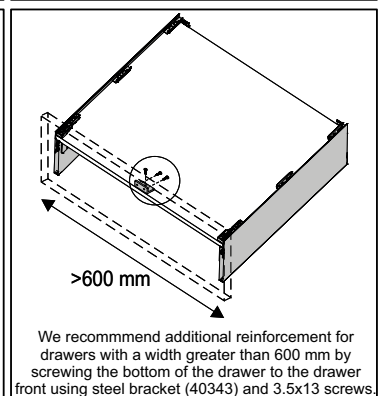
Drawer insertion



Drawer removal



Drawer strengthening



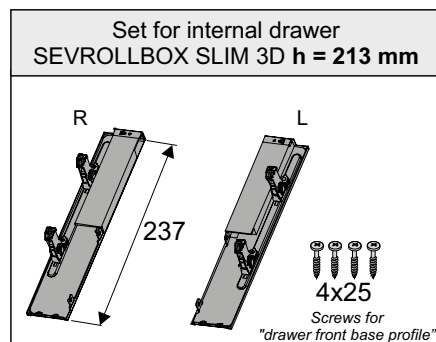
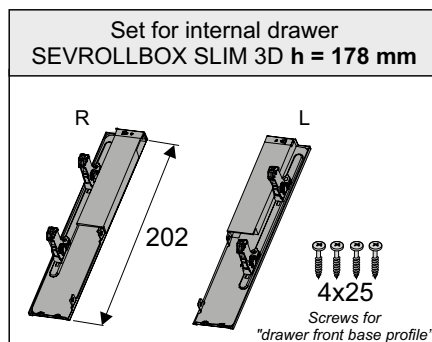
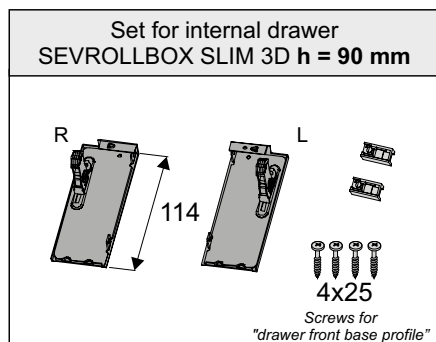
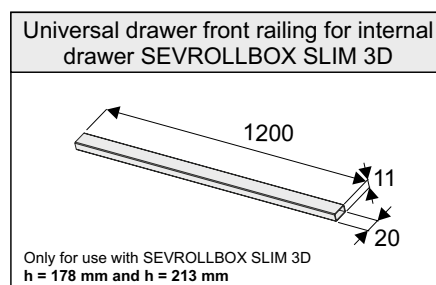
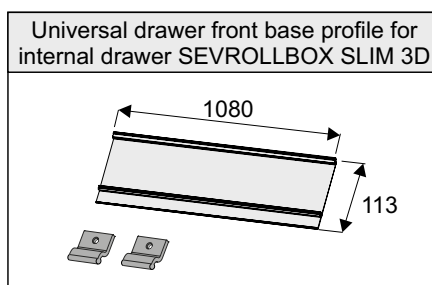
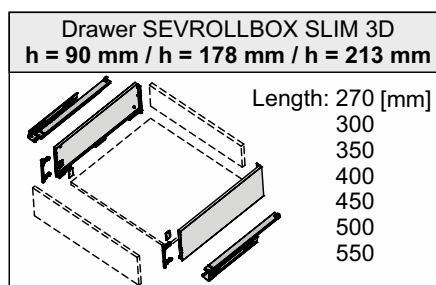


DRAWERS

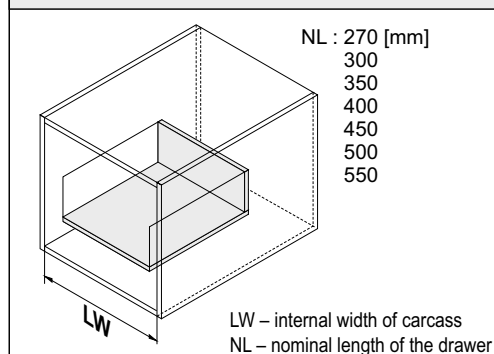
SEVROLLBOX SLIM 3D

Set for internal drawer front

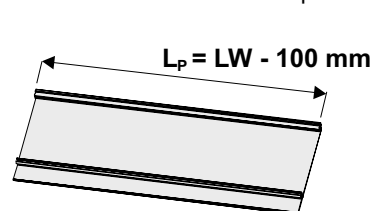
Components:



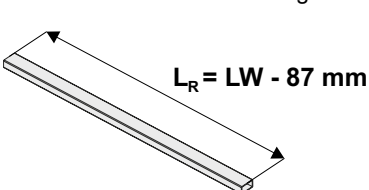
Cutting dimensions of profiles



Universal drawer front base profile

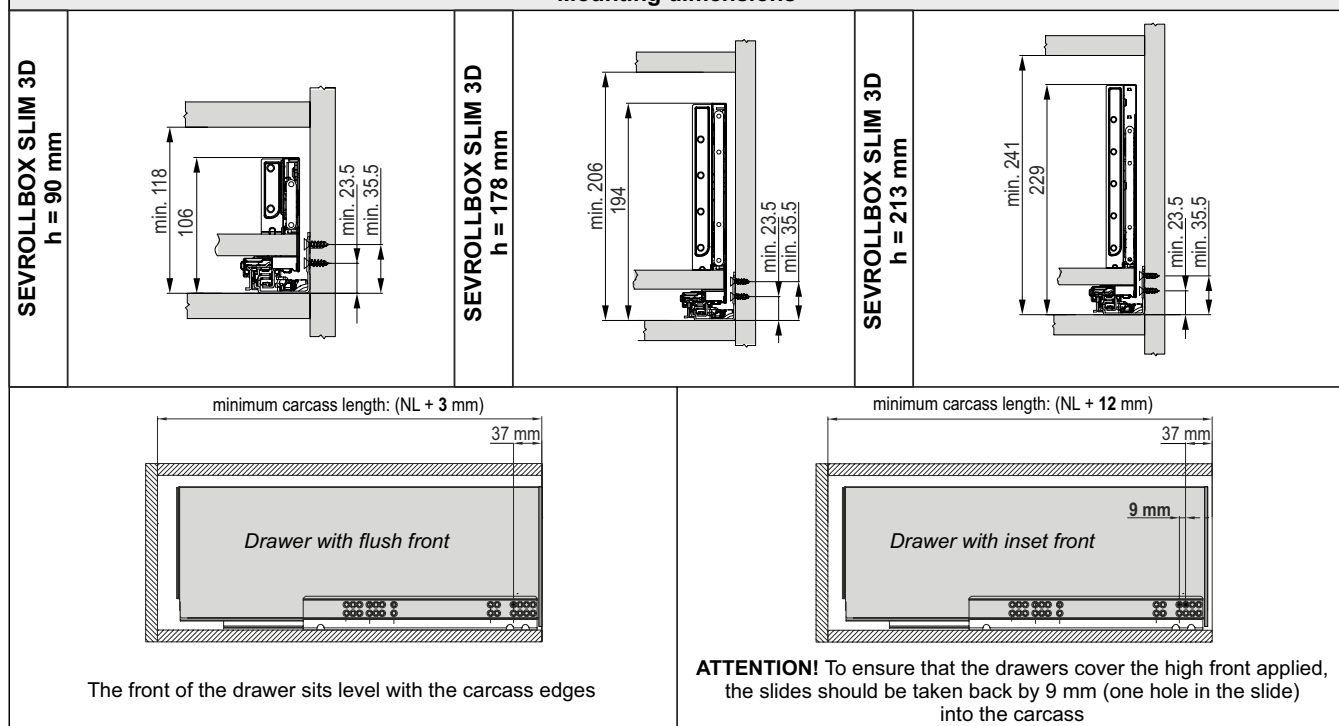


Universal drawer front railing



Calculations for the back wall and base of the drawer can be found in the instructions SEVROLLBOX SLIM 3D

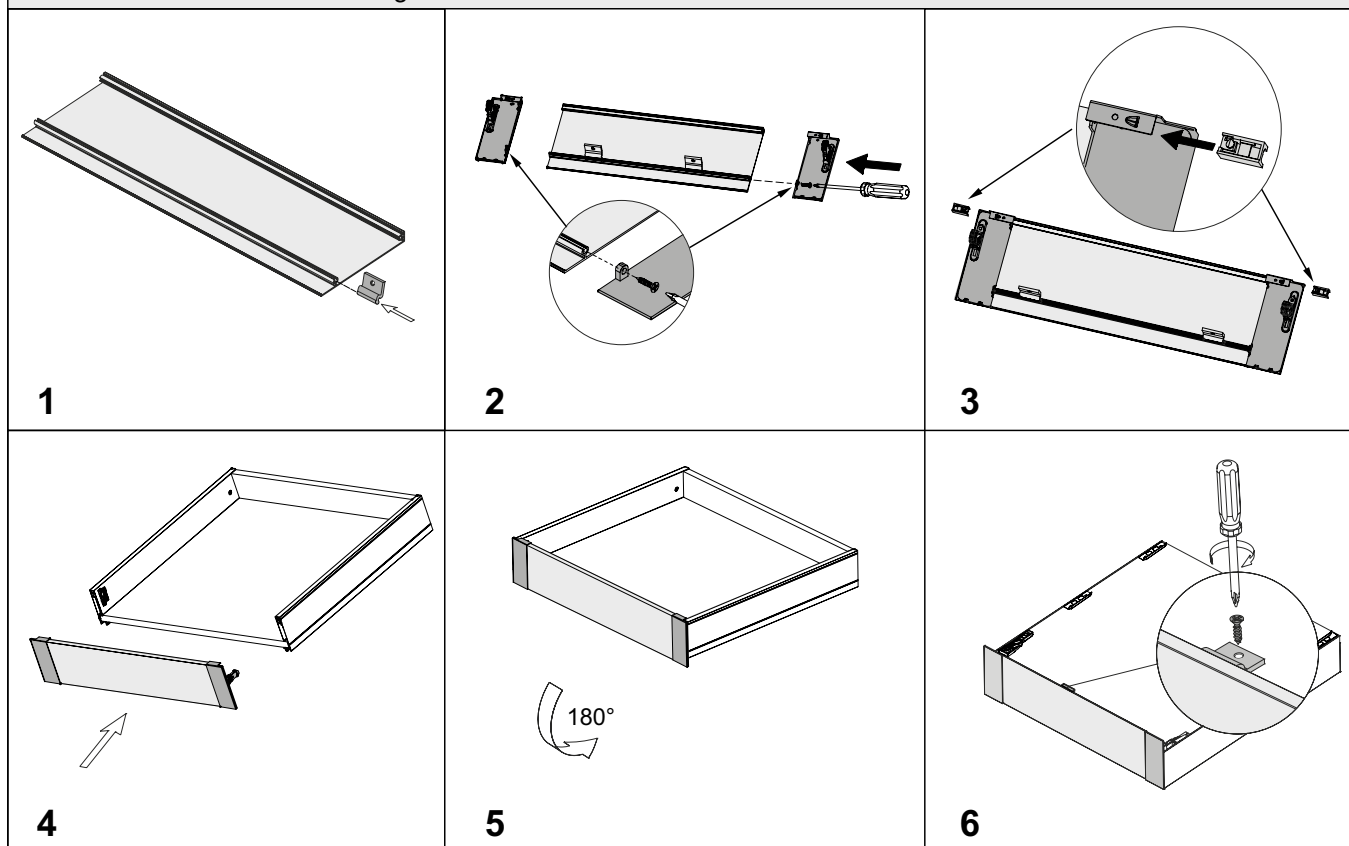
Mounting dimensions



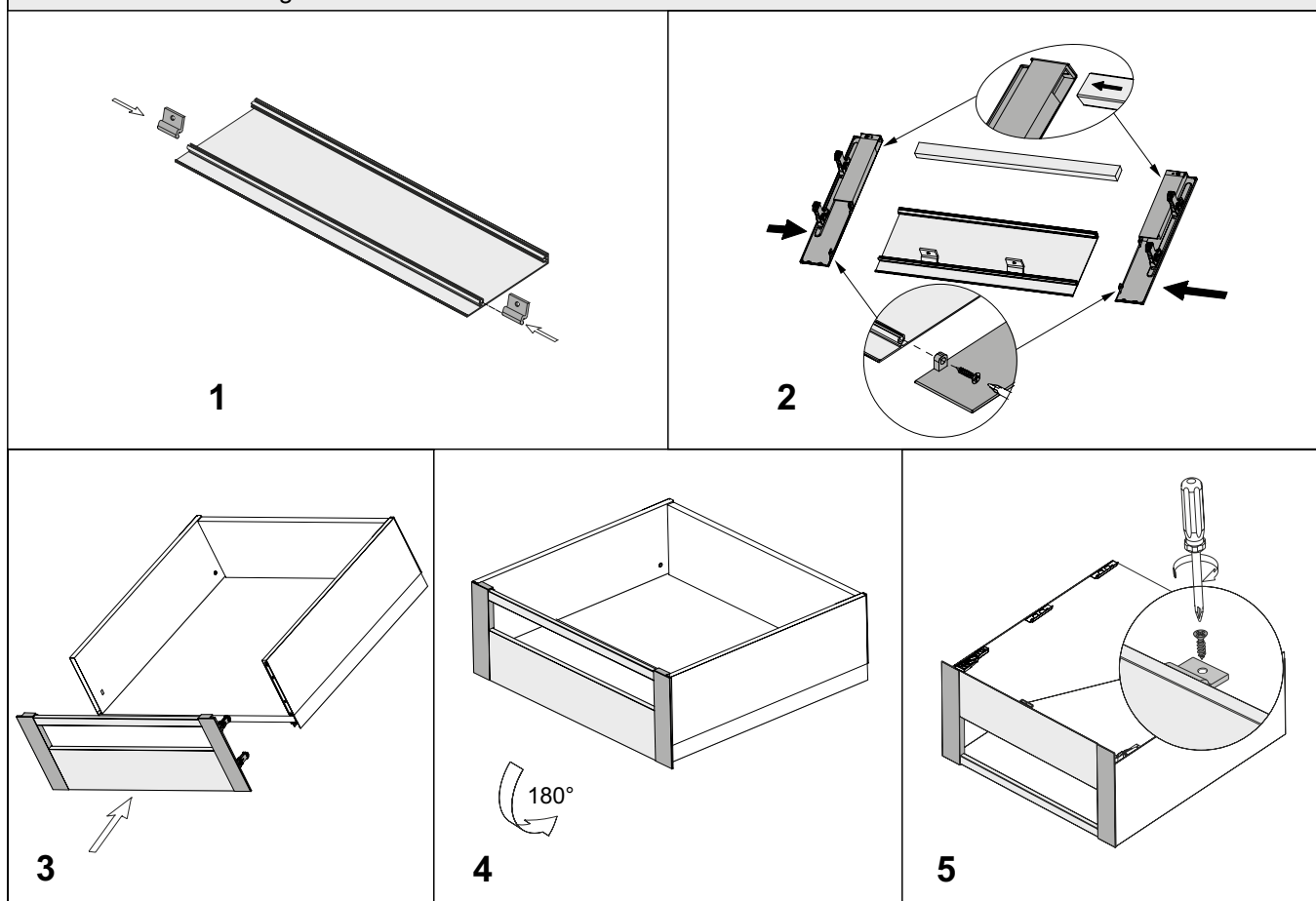


Set for internal drawer front

Installing the drawer front for SEVROLLBOX SLIM 3D h = 90 mm



Installing the drawer front for SEVROLLBOX SLIM 3D h = 178 mm and h = 213 mm





SEVROLLBOX SLIM 3D

GLASS front fitting Set for internal drawer front

Components:

Drawer SEVROLLBOX SLIM 3D h = 90 mm / h = 178 mm / h = 213 mm	Front base profile for glass internal drawer front SEVROLLBOX SLIM 3D
<p>Length: 270 [mm] 300 350 400 450 500 550</p>	

Glass front fitting Set for internal drawer front SEVROLLBOX SLIM 3D h = 90 mm	Glass front fitting Set for internal drawer front SEVROLLBOX SLIM 3D h = 178 mm	Glass front fitting Set for internal drawer front SEVROLLBOX SLIM 3D h = 213 mm
<p>R L 114 196 4x25 Screws for "front base profile for glass"</p>	<p>196 202 4x25 Screws for "front base profile for glass"</p>	<p>237 202 4x25 Screws for "front base profile for glass"</p>

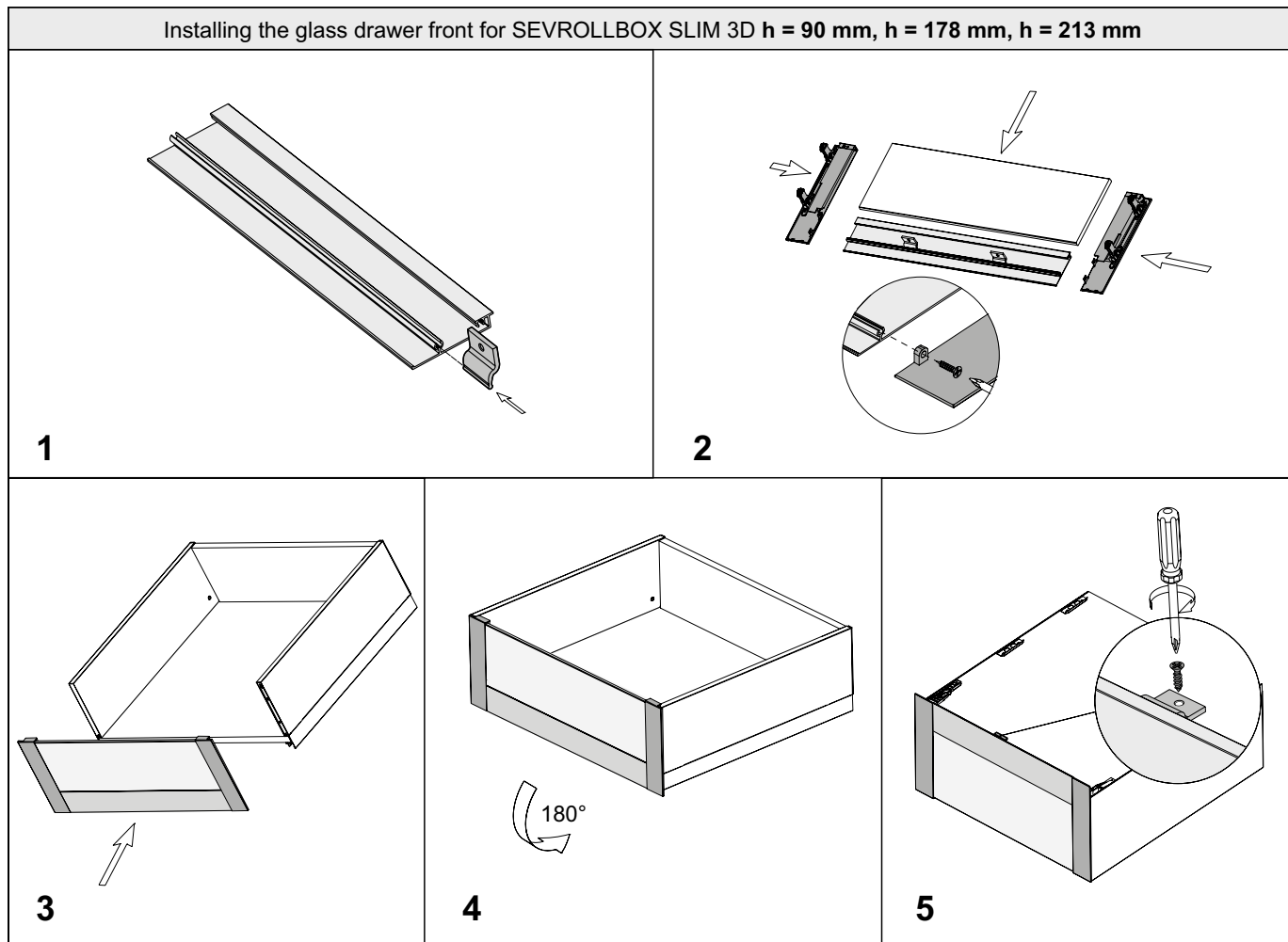
Cutting dimensions of profiles		
<p>NL : 270 [mm] 300 350 400 450 500 550 LW LW – internal width of carcass NL – nominal length of the drawer</p>	Front base profile for glass internal drawer front <p>$L_p = LW - 100 \text{ mm}$</p>	Glass # 8 mm Edges should be polished and chamfered! <p>$L_{sz} = LW - 85 \text{ mm}$</p> <p>$H_{sz}$: 48 mm (for h = 90) 135 mm (for h = 178) 170 mm (for h = 213)</p>
Calculations for the back wall and base of the drawer can be found in the instructions SEVROLLBOX SLIM 3D		

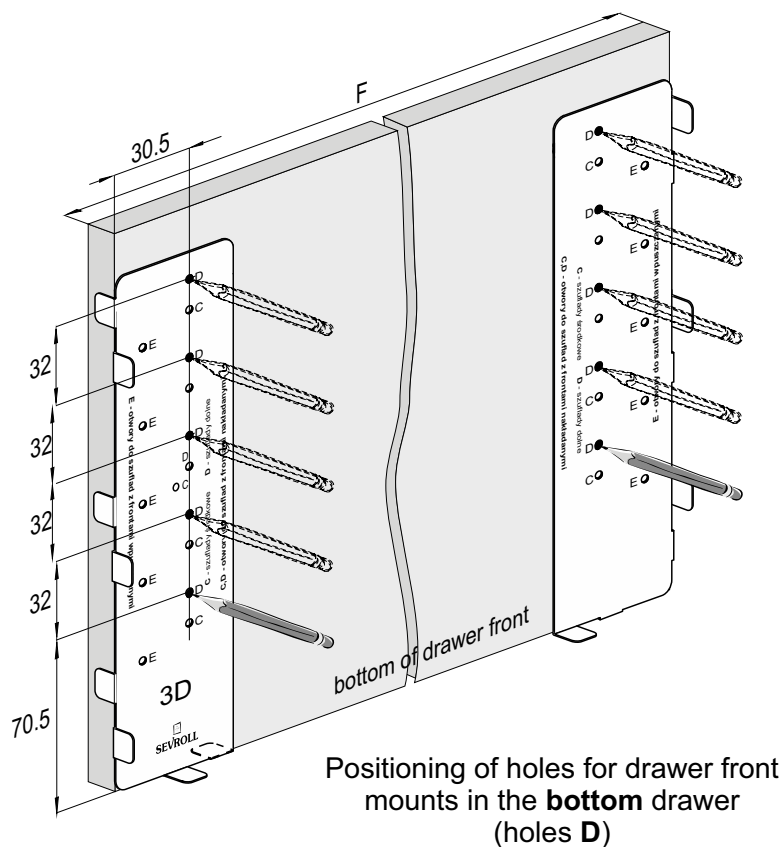
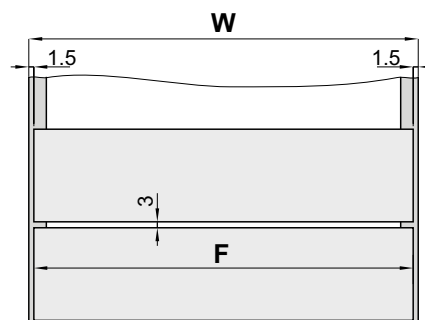
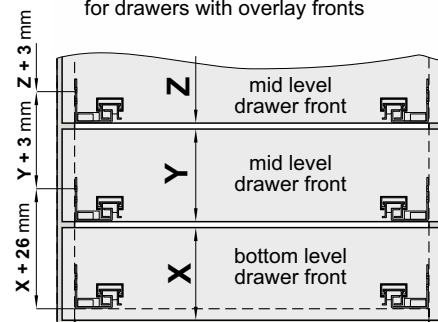
Mounting dimensions			
SEVROLLBOX SLIM 3D h = 90 mm		SEVROLLBOX SLIM 3D h = 178 mm	
SEVROLLBOX SLIM 3D h = 213 mm		SEVROLLBOX SLIM 3D h = 213 mm	
minimum carcass length: (NL + 3 mm) <p>Drawer with flush front</p>		minimum carcass length: (NL + 12 mm) <p>Drawer with inset front</p>	
The front of the drawer sits level with the carcass edges		ATTENTION! To ensure that the drawers cover the high front applied, the slides should be taken back by 9 mm (one hole in the slide) into the carcass	



GLASS front fitting Set for internal drawer front

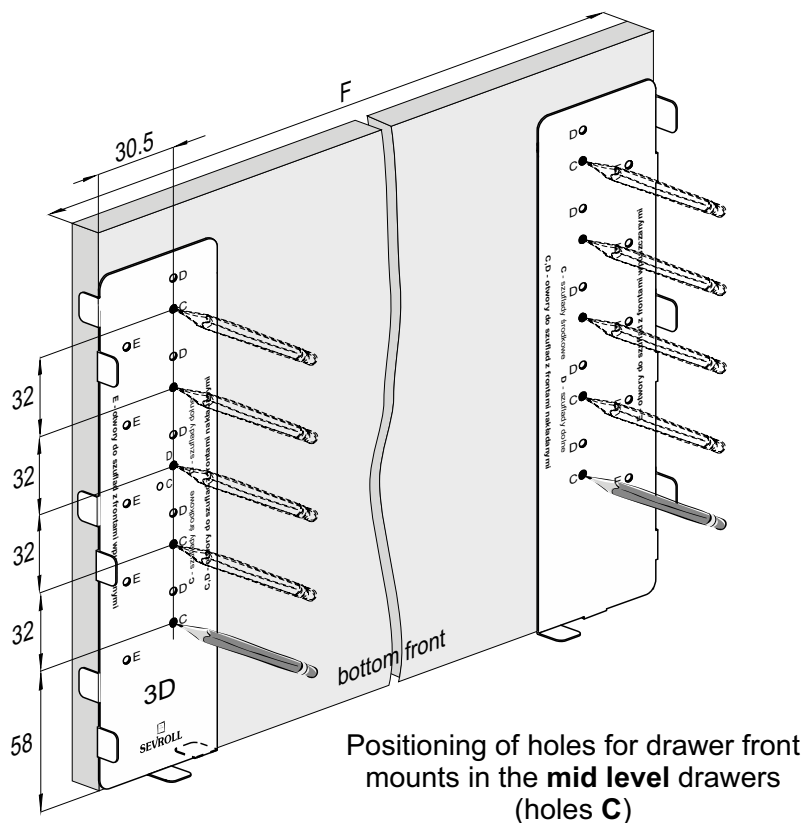
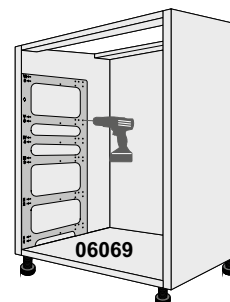
Installing the glass drawer front for SEVROLLBOX SLIM 3D h = 90 mm, h = 178 mm, h = 213 mm



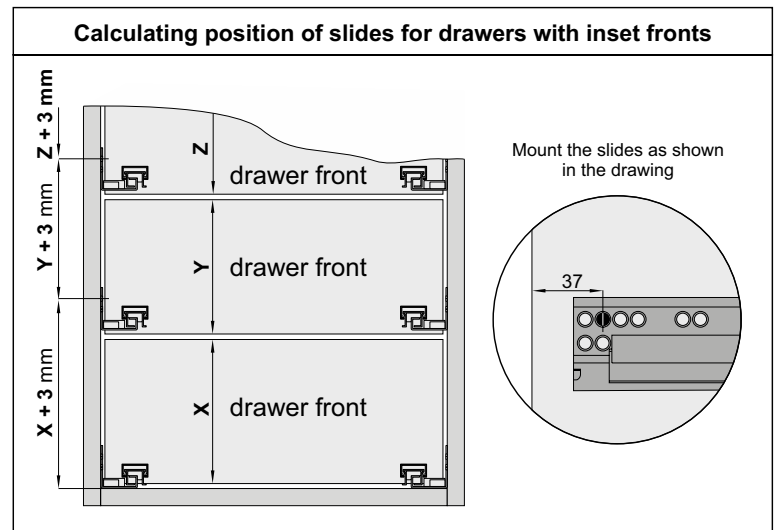
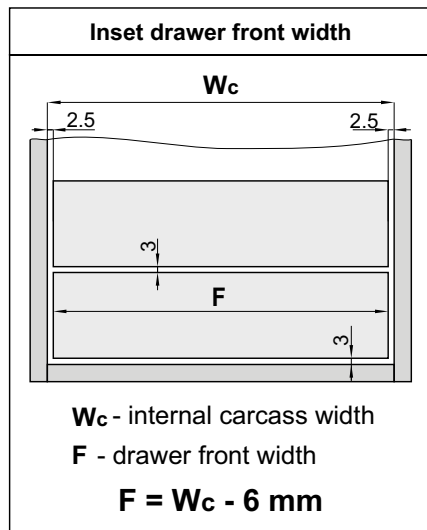
Overlay drawer frontsOverlay drawer front widthCalculating position of slides for drawers with overlay frontsImportant information:

Sevroll's offer also includes templates:
Sevrollbox Slim 3D for slides
(index: 06084), and **Universal template**
for drawers **Sevrollbox Slim and Slim 3D**
(index: 06069) they are designed for easy
and precise marking of holes for slide mounting

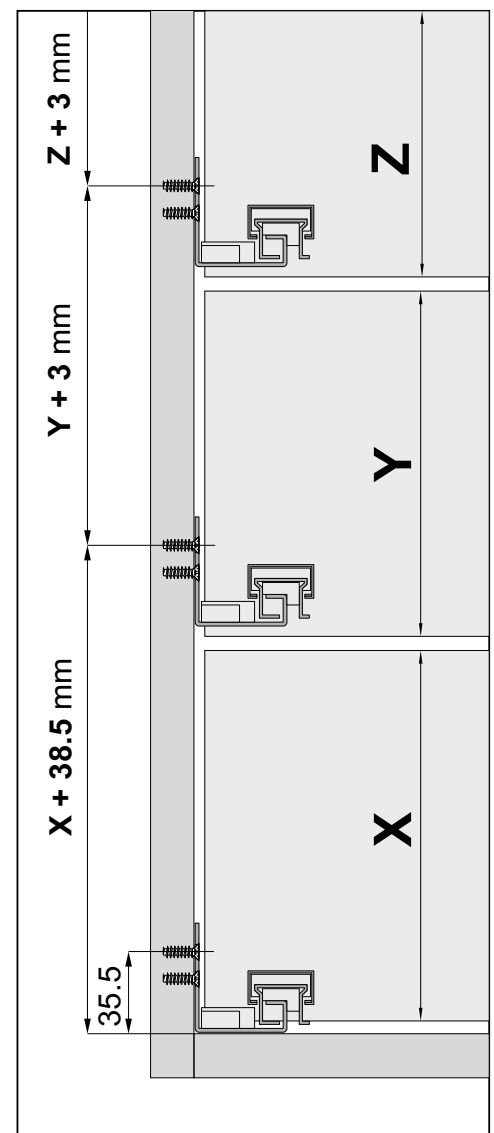
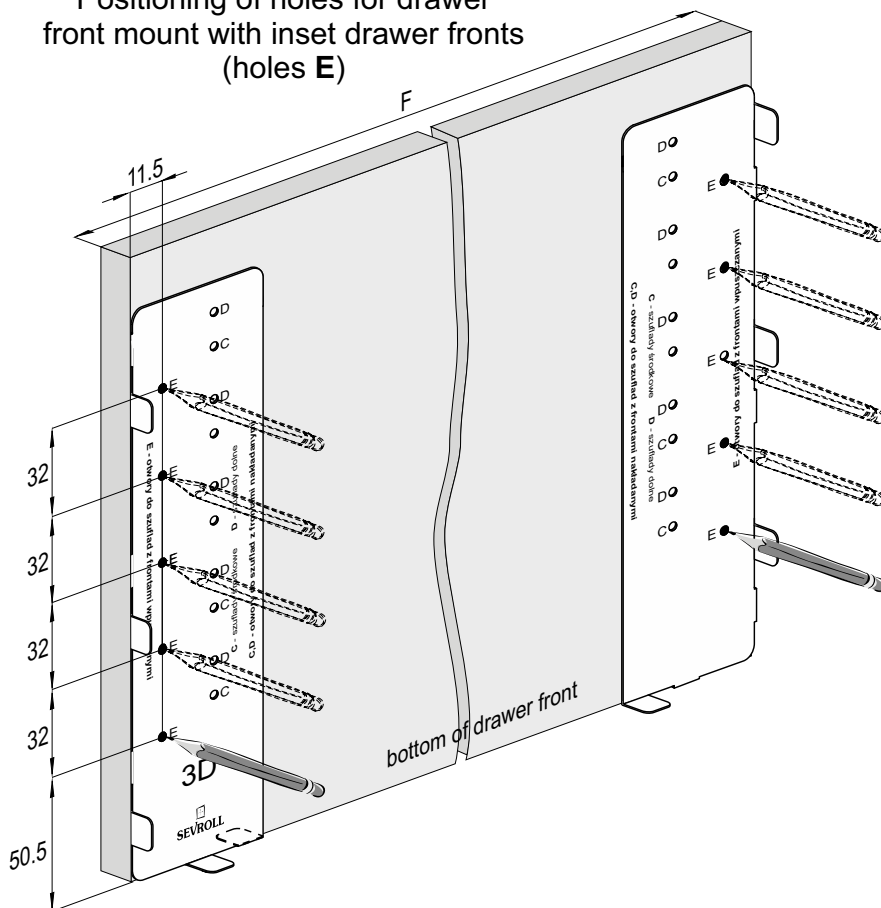
06084



Inset drawer fronts

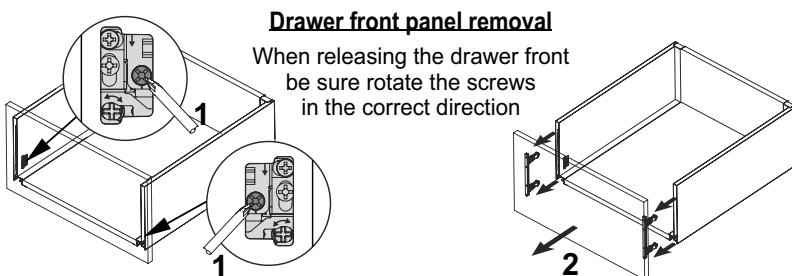


Positioning of holes for drawer front mount with inset drawer fronts (holes E)



Drawer front panel removal

When releasing the drawer front be sure rotate the screws in the correct direction

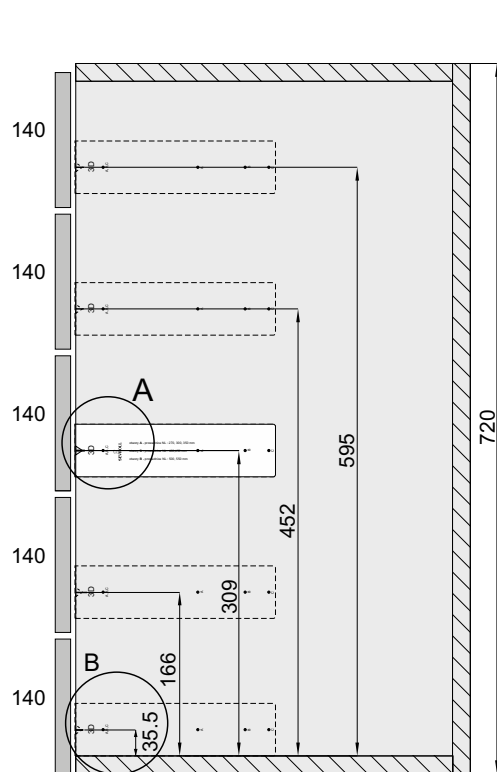




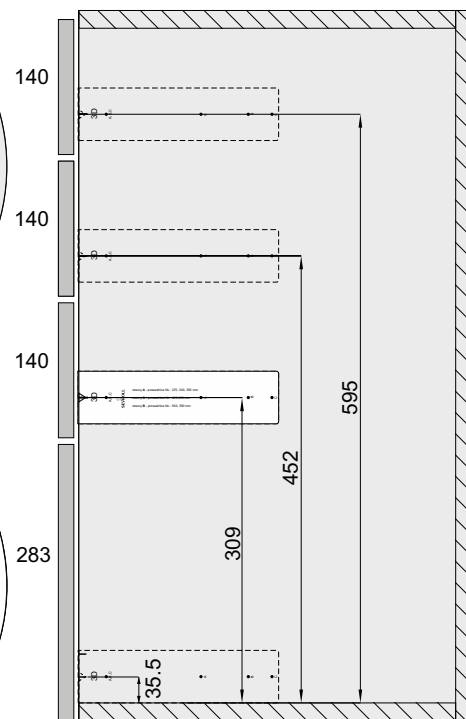
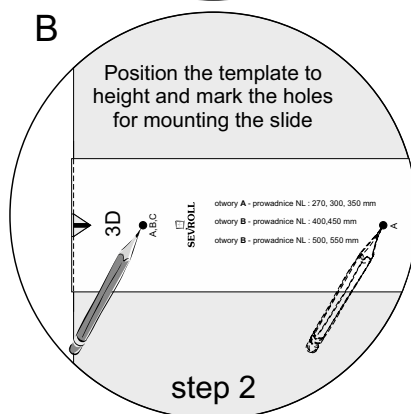
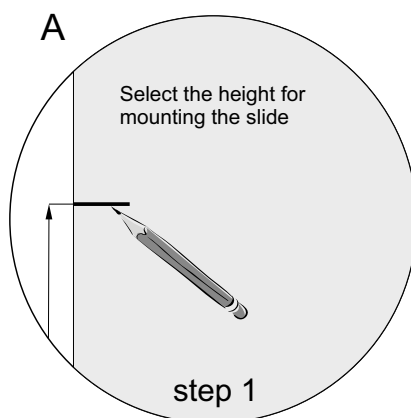
SEVROLLBOX SLIM 3D DRAWER TEMPLATE FOR SLIDES

Marking holes for attaching the slides to Sevrollbox Slim 3D drawers
with **overlays** fronts

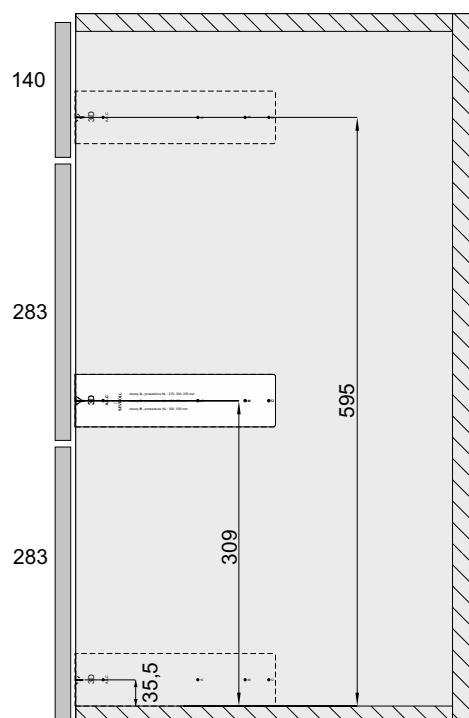
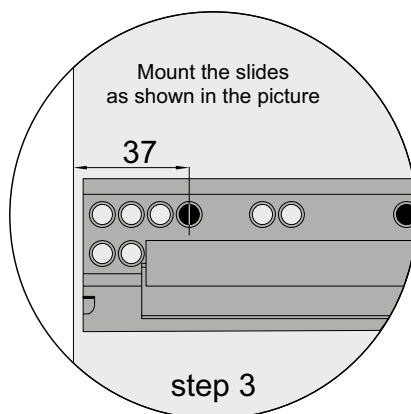
The height of Sevrollbox Slim 3D slides in furniture carcasses (height 720 mm)
- **4 variants**



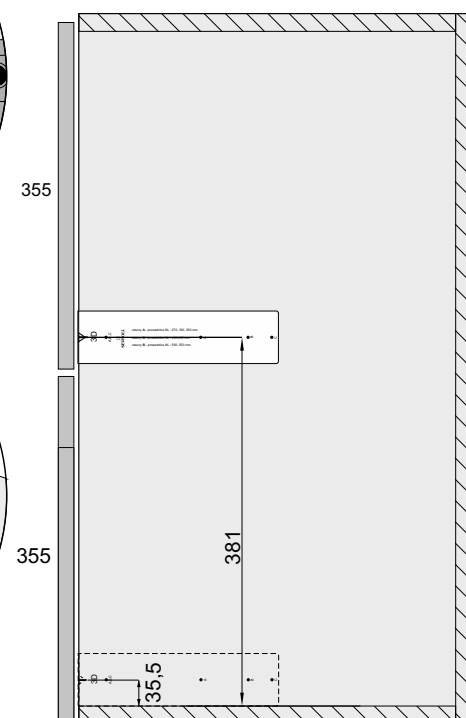
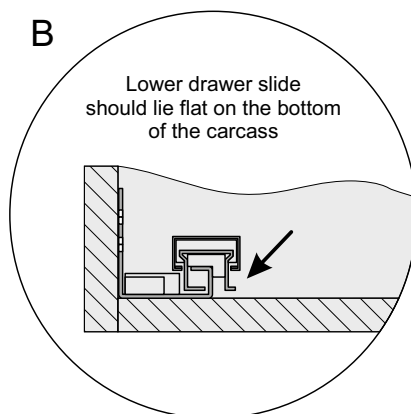
variant 1- x5



variant 2 - 3+1



variant 3 - 1+2



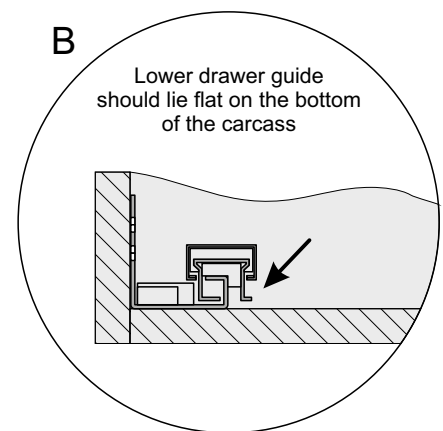
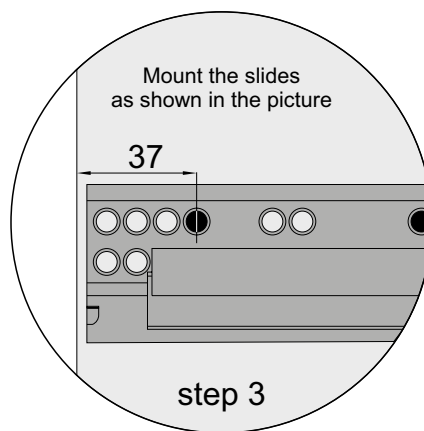
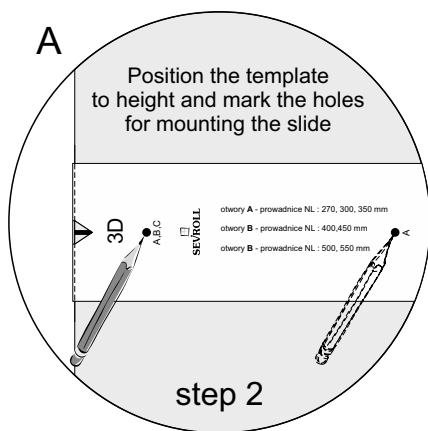
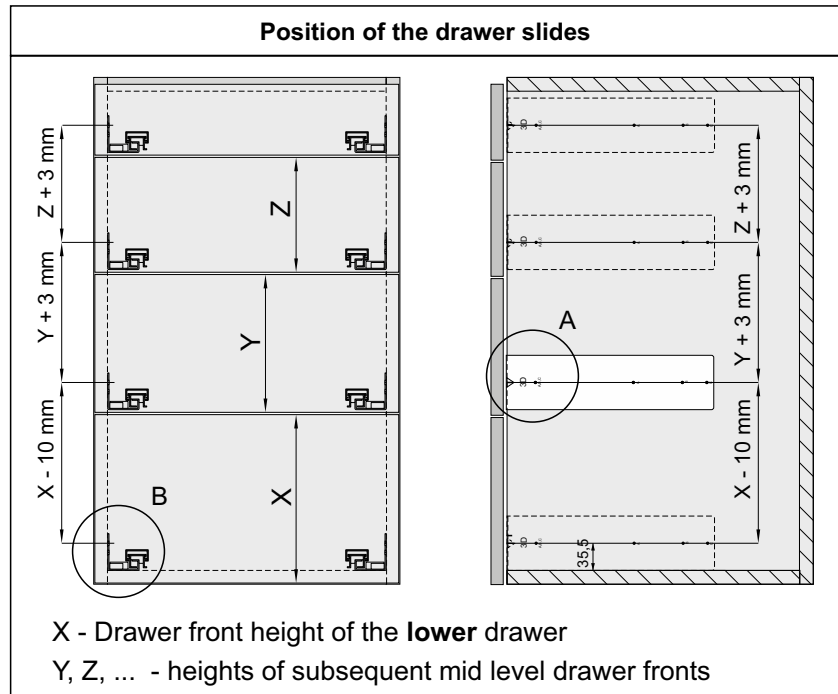
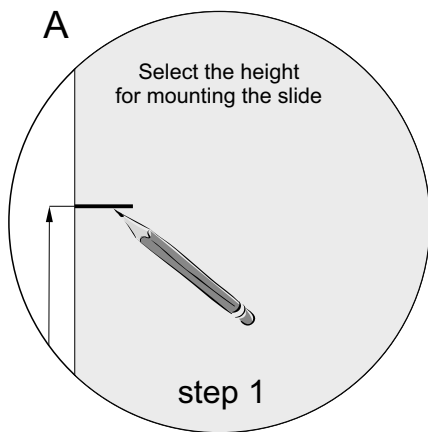
variant 4 - x2



SEVROLLBOX SLIM 3D DRAWER TEMPLATE FOR SLIDES

Marking holes for attaching the slides to Sevrollbox Slim 3D drawers
with **overlays** fronts

Any height of carcass, quantity and drawer front height



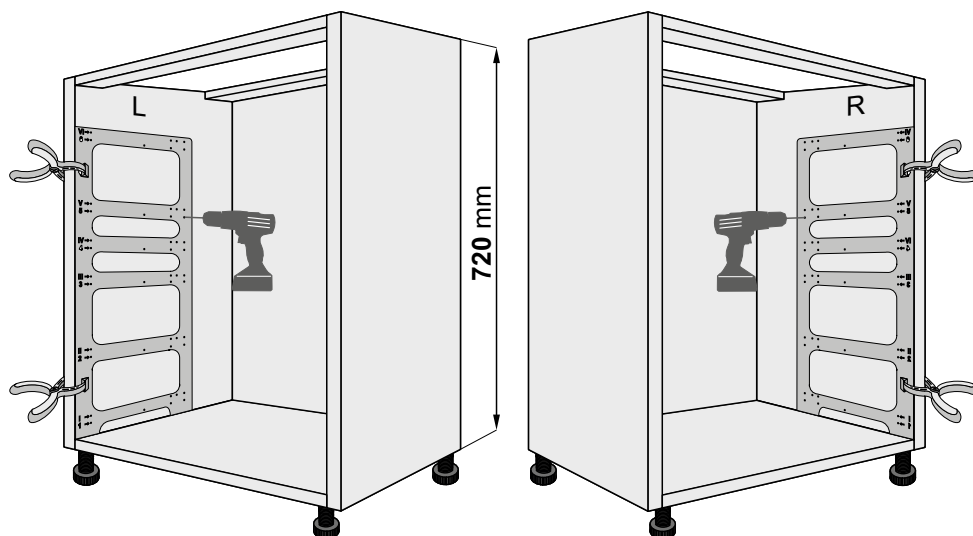
Important information

Sevroll's offer also includes the template
Sevrollbox Slim 3D for drawer fronts (**index: 06064**). This is used for marking
the holes to mount drawer fronts to Sevrollbox Slim 3D drawers.

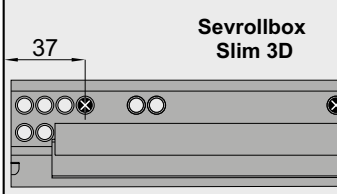
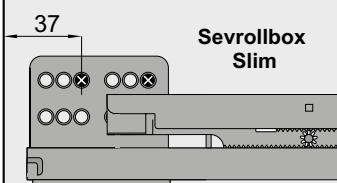


UNIVERSAL TEMPLATE FOR DRAWERS

SEVROLLBOX SLIM and SLIM 3D (INSTALLATION OF DRAWER SLIDES)

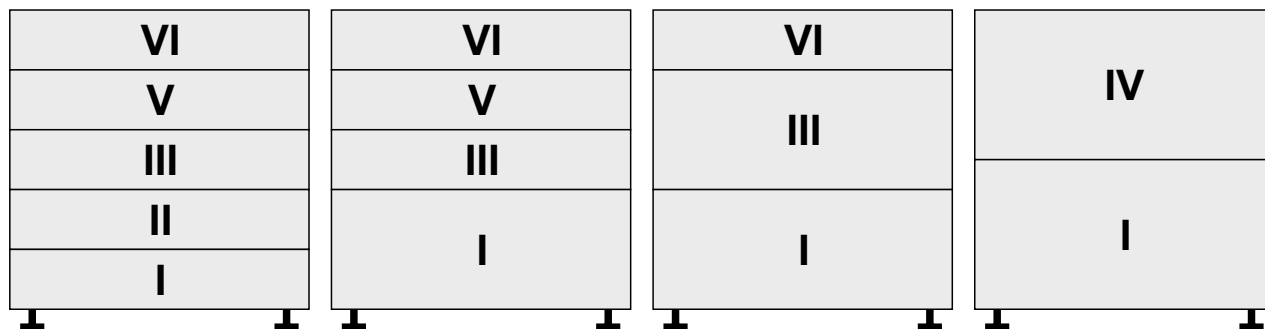


install the slides as shown in the drawing below (overlay fronts)

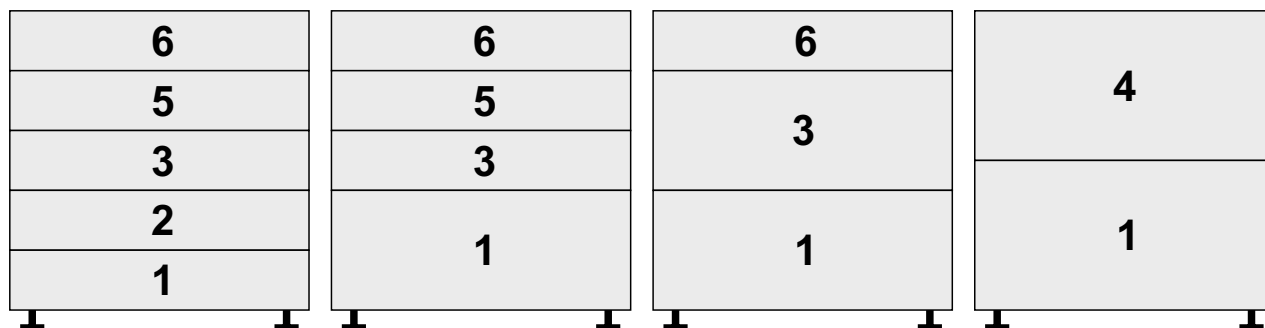


1. Template must be placed on the side of the frame as shown in the drawing (clamps can be used)
2. Depending on the position of the fronts, we drill holes for slide mounting in the suitable places on the template (drill $\varnothing 2.5$ mm)

Sevrollbox Slim drawers - use template holes in positions I-VI



Sevrollbox Slim 3D drawers - use template holes in places 1-6



Important information

Sevroll's offer also includes the template:

- Sevrollbox Slim for drawer fronts (Index: 05338)
- Sevrollbox Slim 3D for drawer fronts (Index: 06064)

This is used for marking the holes to mount drawer fronts to Sevrollbox Slim drawers.

