

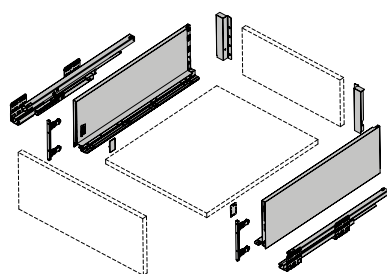


DRAWERS

SEVROLLBOX SLIM – Height 84* / 116** / 167*** / 199****mm

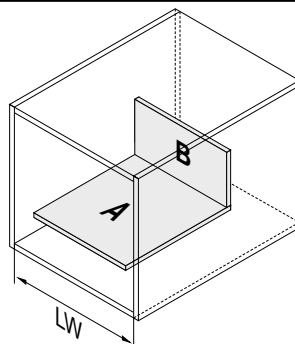
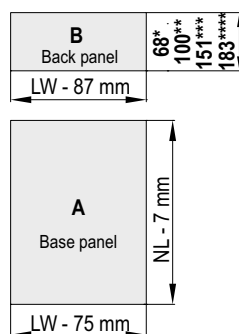
ATTENTION: * dimensions for drawers 84 mm / ** dimensions for drawers 116 mm / *** dimensions for drawers 167 mm / **** dimensions for drawers 199 mm

Components



ATTENTION!
screws are not included

Cutting dimensions of 16 mm MDF



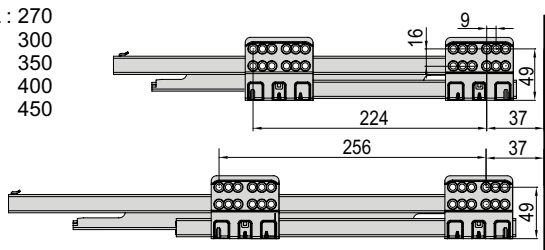
NL : 270 [mm]
300
350
400
450
500
550

A - Base panel
B - Back panel

LW – internal cabinet width
NL – nominal length of drawer

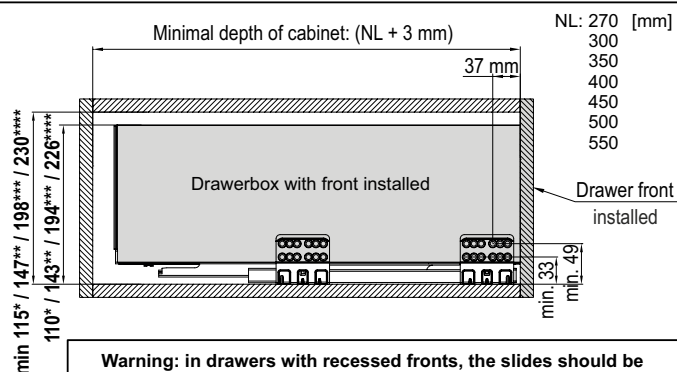
Drawer slide positioning and required space between drawers

Slide NL : 270
300
350
400
450



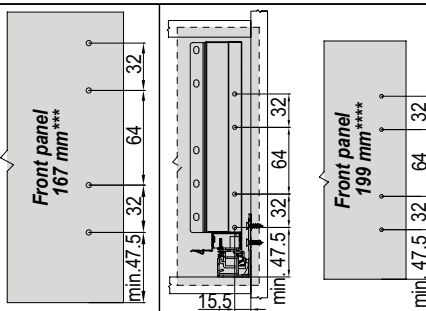
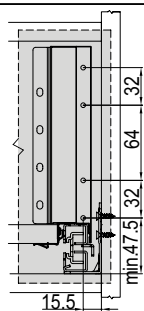
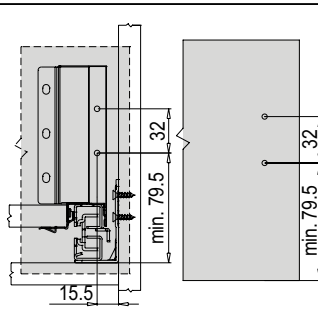
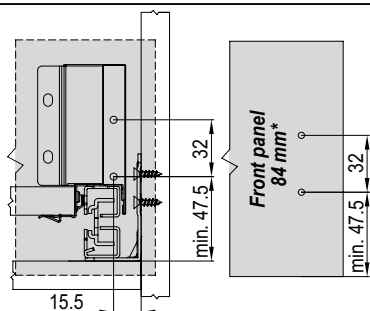
Slide NL : 500
550

Minimal depth of cabinet: (NL + 3 mm)



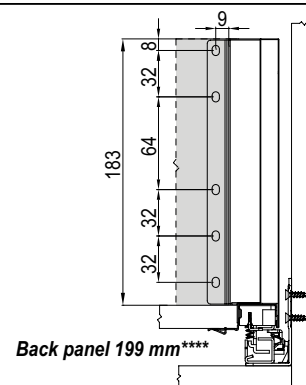
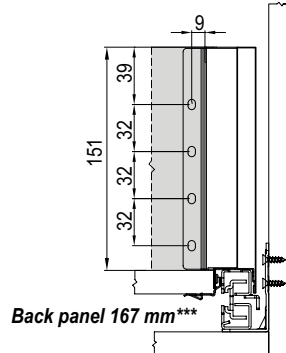
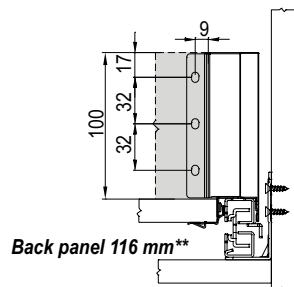
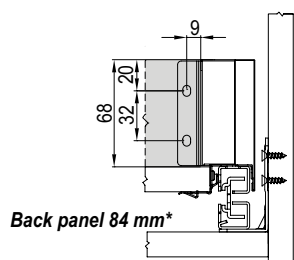
Warning: in drawers with recessed fronts, the slides should be positioned further back by the thickness of the drawer front!

Mounting dimensions for drawer front panel



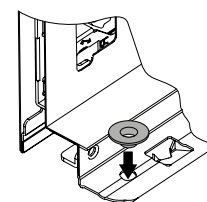
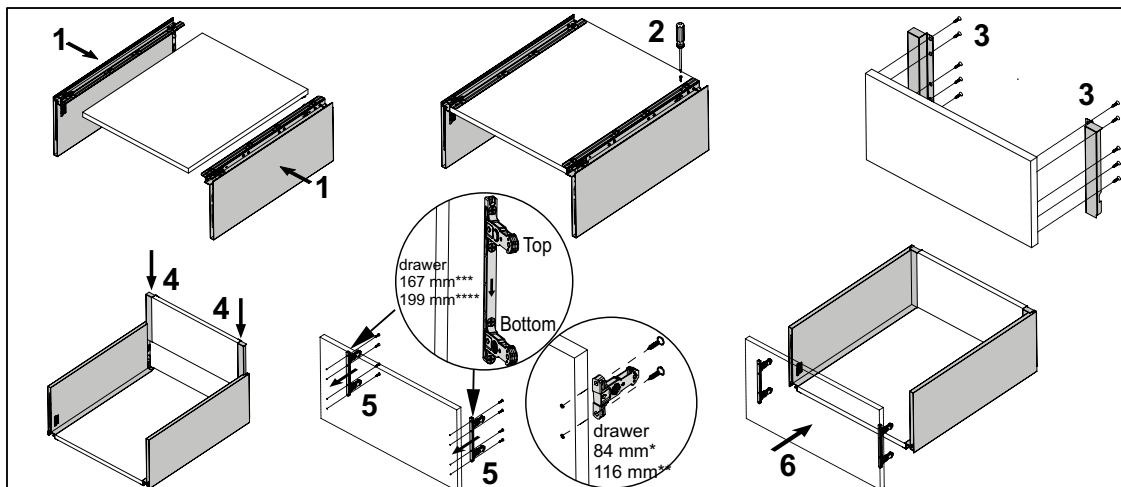
To precisely drill your holes we recommend using Sevrill templates: for assembly of drawer front mounts (05338) / for assembly of drawer guides (05337)

Mounting dimensions of back panel





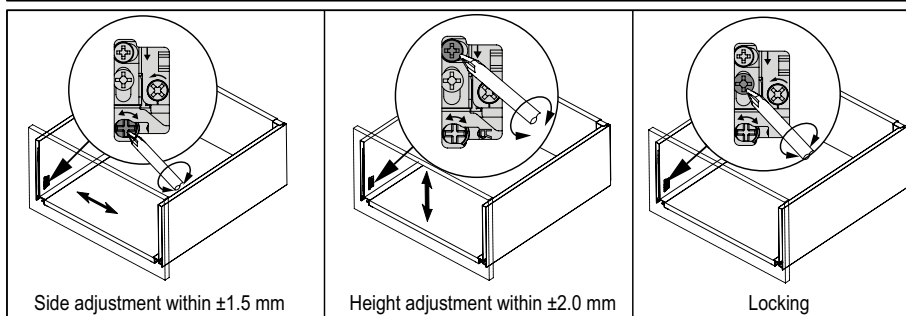
Drawer assembly



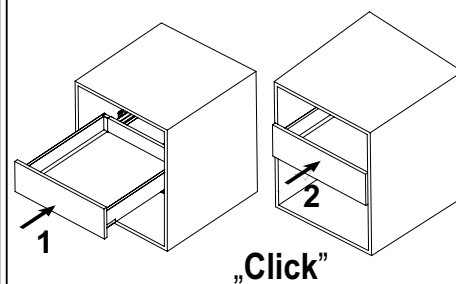
If you find the drawer base panel is loose when fitted to the drawer sides, you can pack the fixing points with washers

To precisely drill your holes we recommend using Sevroll templates for assembly of drawer front mounts (05338)

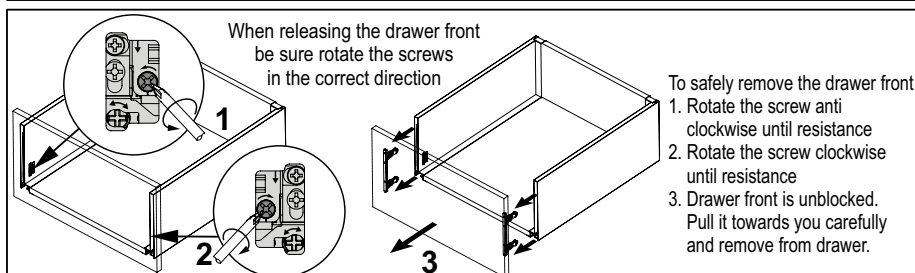
Drawer front regulation



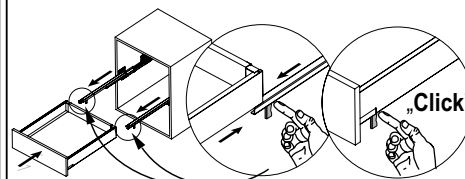
Drawer insertion



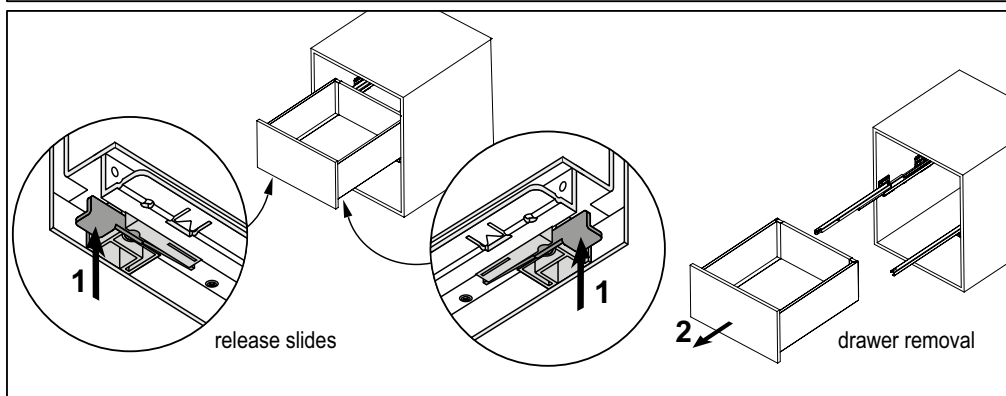
Drawer front panel removal



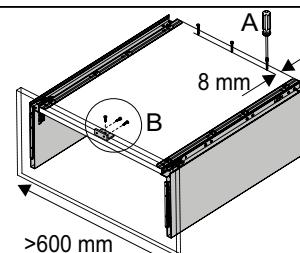
Additionally: For ease of assembly (especially with full overlay fronts) you can withdraw the slides. Hold in the highlighted position and use the release catches.



Drawer removal



Drawer strengthening



We recommend additional reinforcement for drawers with a width greater than 600 mm:
A - screw the bottom of the drawer to the drawer back using three 3.5 x 30 screws
B - screwing the bottom of the drawer to the drawer front using steel bracket (40343) and 3.5x13 screws



DRAWERS

SEVROLLBOX SLIM

Set for internal drawer front

Components:

Drawer SEVROLLBOX SLIM h = 84 mm / h = 167 mm / h = 199 mm	Universal drawer front base profile for internal drawer SEVROLLBOX SLIM	Universal drawer front railing for internal drawer SEVROLLBOX SLIM
<p>Length: 270 [mm] 300 350 400 450 500 550</p>		<p>Only for use with SEVROLLBOX SLIM h = 167 mm and h = 199 mm</p>
Set for internal drawer SEVROLLBOX SLIM h = 84 mm	Set for internal drawer SEVROLLBOX SLIM h = 167 mm	Set for internal drawer SEVROLLBOX SLIM h = 199 mm
<p>4x20 Screws for "drawer front base profile"</p> <p>M3x7 Screws for "Set for internal drawer"</p>	<p>4x20 Screws for "drawer front base profile"</p> <p>M3x7 Screws for "Set for internal drawer"</p>	<p>4x20 Screws for "drawer front base profile"</p> <p>M3x7 Screws for "Set for internal drawer"</p>

Cutting dimensions of profiles

<p>NL : 270 [mm] 300 350 400 450 500 550</p> <p>LW – internal width of carcass NL – nominal length of the drawer</p>	Universal drawer front base profile	Universal drawer front railing
	<p>$L_p = LW - 100 \text{ mm}$</p>	<p>$L_R = LW - 87 \text{ mm}$</p>
Calculations for the back wall and base of the drawer can be found in the instructions SEVROLLBOX SLIM		

Mounting dimensions

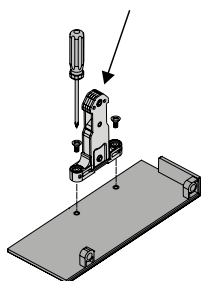
SEVROLLBOX SLIM h = 84 mm		SEVROLLBOX SLIM h = 167 mm		SEVROLLBOX SLIM h = 199 mm	
Drawer with flush front minimum carcass length: (NL + 3 mm) 			Drawer with inset front minimum carcass length: (NL + 12 mm) 		
The front of the drawer sits level with the carcass edges			ATTENTION! To ensure that the drawers cover the high front applied, the slides should be taken back by 9 mm (one hole in the slide) into the carcass		



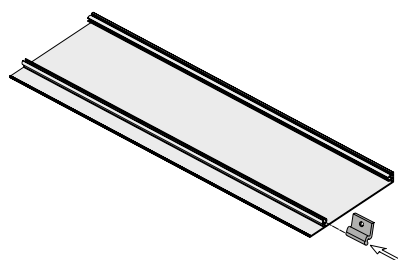
Set for internal drawer front

Installing the drawer front for SEVROLLBOX SLIM h = 84 mm

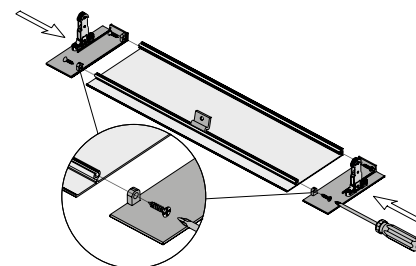
ATTENTION! Use the drawer front catches supplied with your **Sevrollbox Slim** drawer h = 84 mm



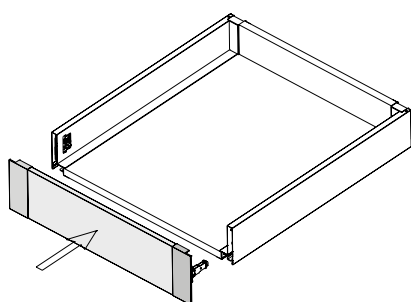
1



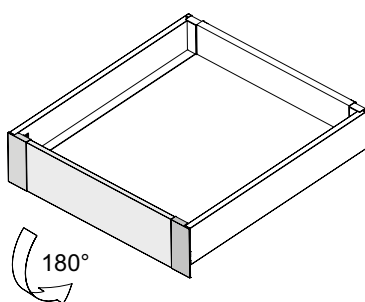
2



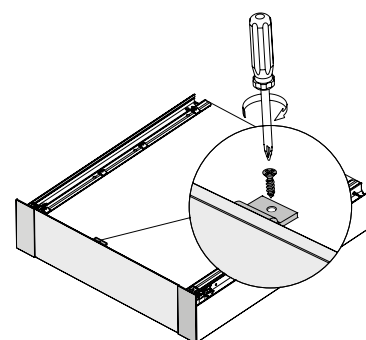
3



4



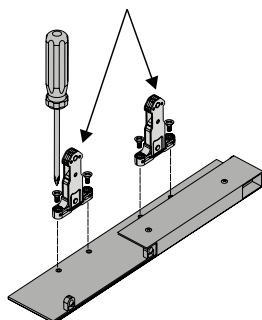
5



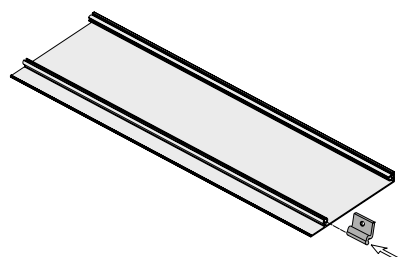
6

Installing the drawer front for SEVROLLBOX SLIM h = 167 mm and h = 199 mm

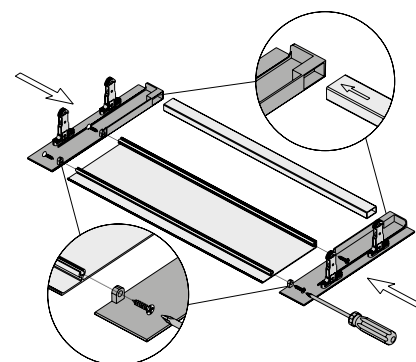
ATTENTION! Use the drawer front catches supplied with your **Set for internal drawer SEVROLLBOX SLIM** h = 167 mm and h = 199 mm



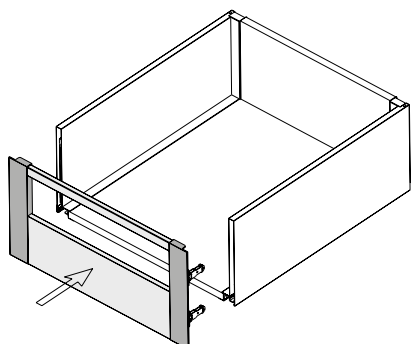
1



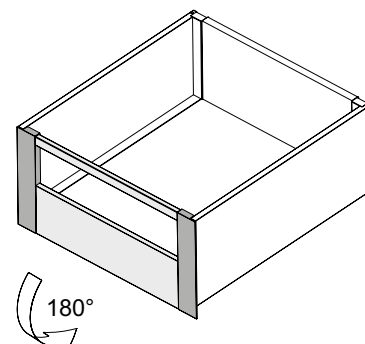
2



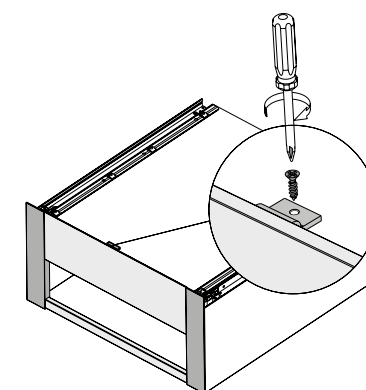
3



4



5



6

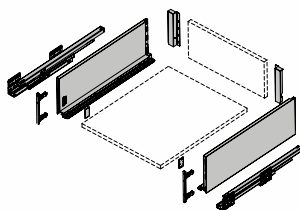


DRAWERS

SEVROLLBOX SLIM

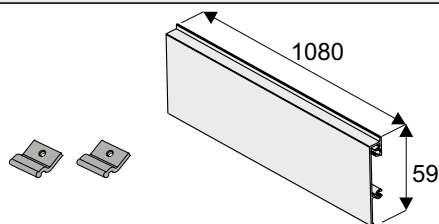
GLASS front fitting Set for internal drawer front

Drawer SEVROLLBOX SLIM
h = 84 mm / h = 167 mm / h = 199 mm

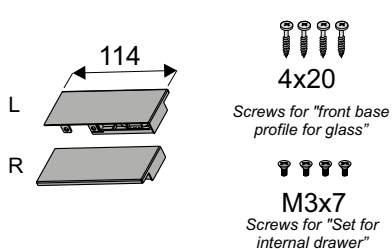


Length: 270 [mm]
300
350
400
450
500
550

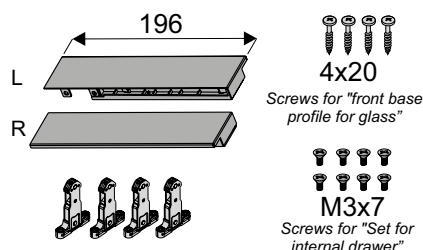
Front base profile for glass
internal drawer front SEVROLLBOX SLIM



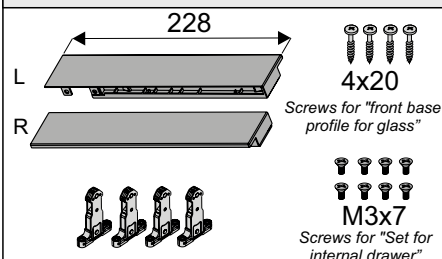
Glass front fitting Set
for internal drawer front
SEVROLLBOX SLIM h = 84 mm



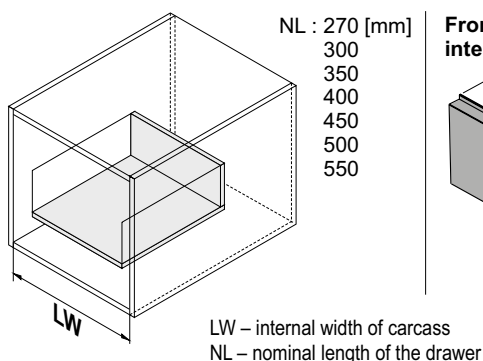
Glass front fitting Set
for internal drawer front
SEVROLLBOX SLIM h = 167 mm



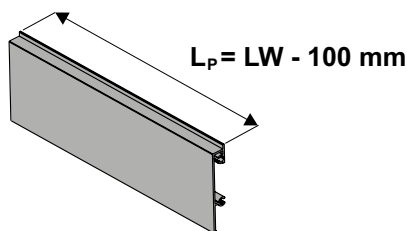
Glass front fitting Set
for internal drawer front
SEVROLLBOX SLIM h = 199 mm



Cutting dimensions of profiles

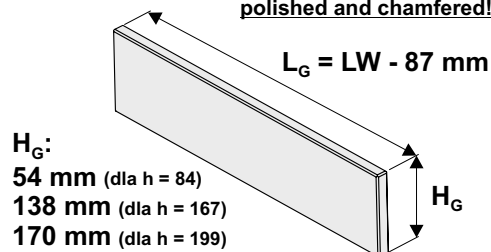


Front base profile for glass
internal drawer front



Glass # 8 mm

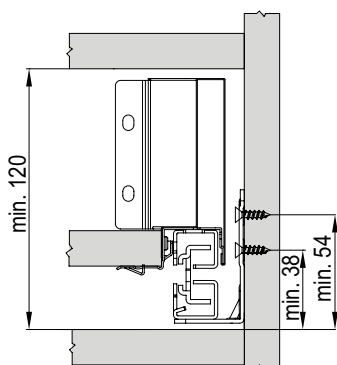
Edges should be
polished and chamfered!



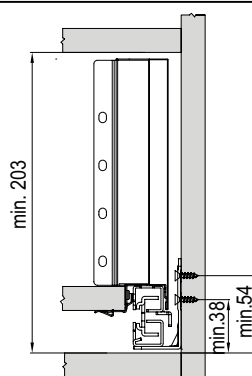
Calculations for the back wall and base of the drawer
can be found in the instructions SEVROLLBOX SLIM

Mounting dimensions

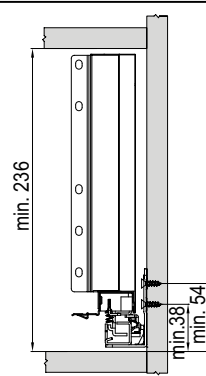
SEVROLLBOX SLIM h = 84 mm



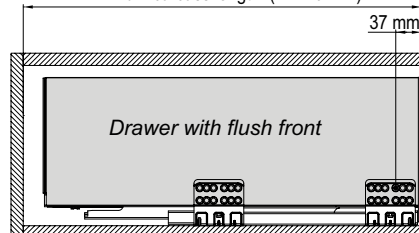
SEVROLLBOX SLIM h = 167 mm



SEVROLLBOX SLIM h = 199 mm

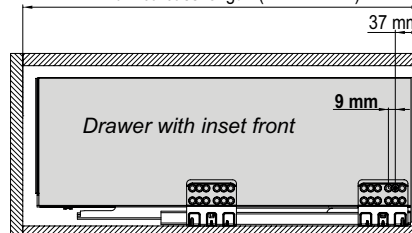


minimum carcass length: (NL + 3 mm)



The front of the drawer sits level with the carcass edges

minimum carcass length: (NL + 12 mm)



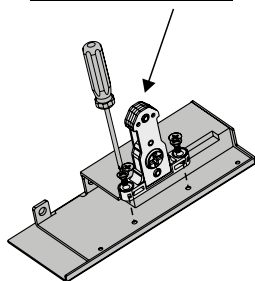
ATTENTION! To ensure that the drawers cover the high front applied,
the slides should be taken back by 9 mm (one hole in the slide)
into the carcass



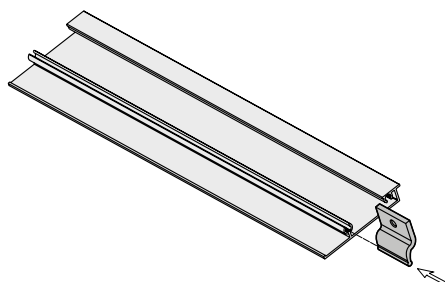
GLASS front fitting Set for internal drawer front

Installing the glass drawer front for SEVROLLBOX SLIM h = 84 mm

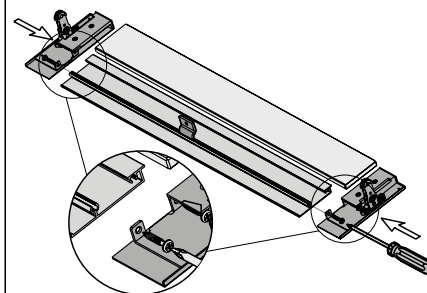
ATTENTION! Use the drawer front catches supplied with your **Sevrollbox Slim** drawer h = 84 mm



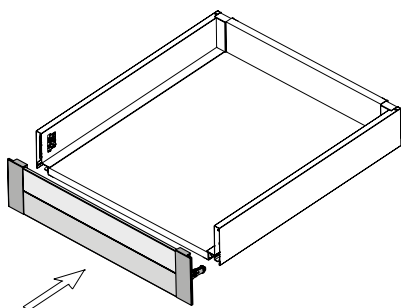
1



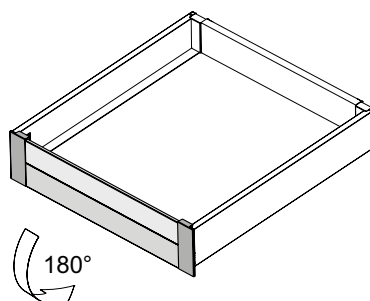
2



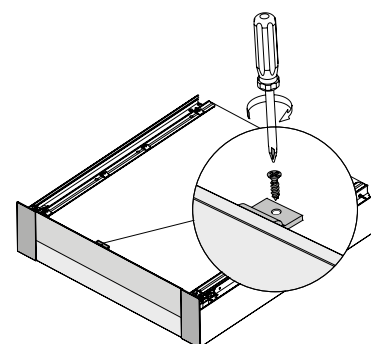
3



4



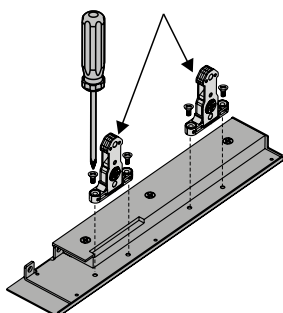
5



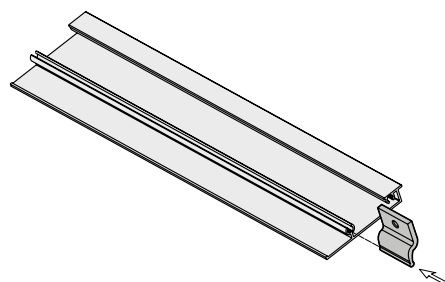
6

Installing the glass drawer front for SEVROLLBOX SLIM h = 167 mm and h = 199 mm

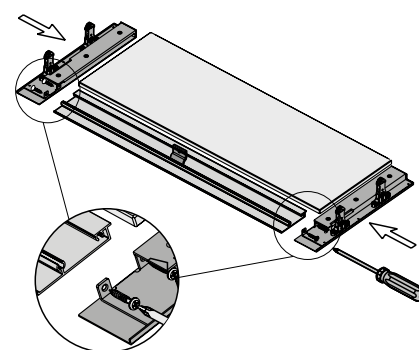
ATTENTION! Use the drawer front catches supplied with your **Set for internal drawer SEVROLLBOX SLIM** h = 167 mm and h = 199 mm



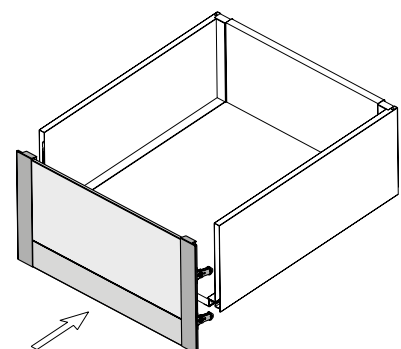
1



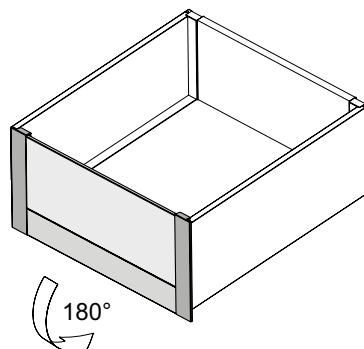
2



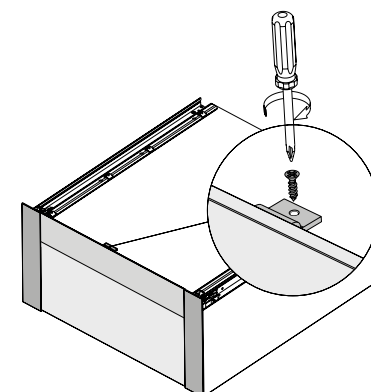
3



4



5

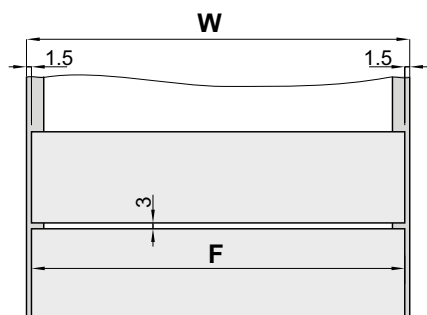


6



SEVROLLBOX SLIM II DRAWER FRONT TEMPLATE

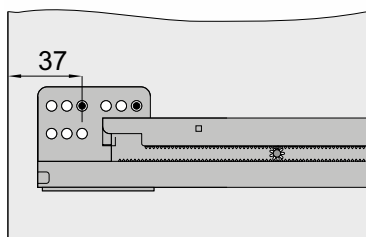
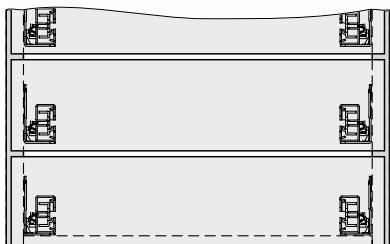
Overlay drawer front width



W - internal carcass width
F - drawer front width

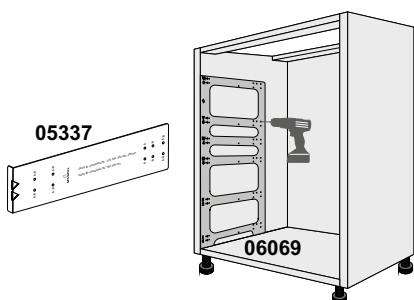
$$F = D - 3 \text{ mm}$$

Template **Sevrollbox Slim** for slides can be used to determine slide positions with overlay drawer fronts

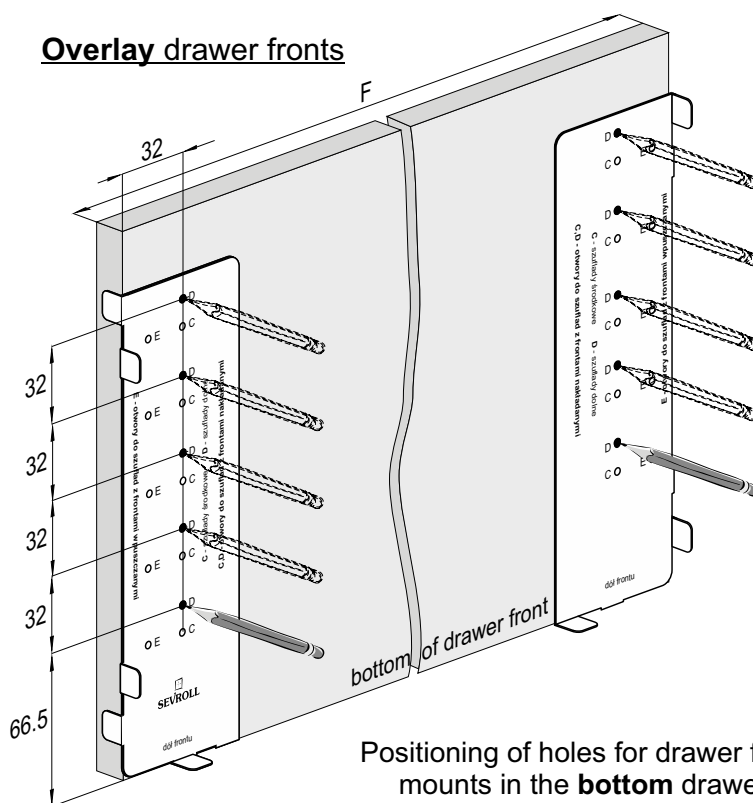


Important information

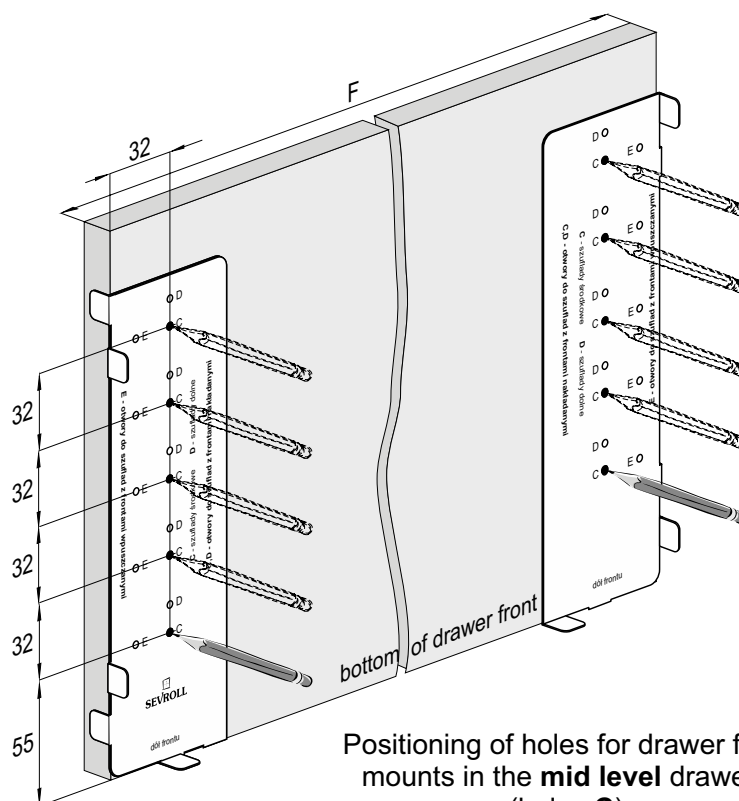
Sevroll offers the templates:
Sevrollbox Slim for slides (index: **05337**)
and **Universal template for drawers**
Sevrollbox Slim and Slim 3D (index: **06069**)
for determining the hole positioning for slides in Sevrollbox Slim drawers.



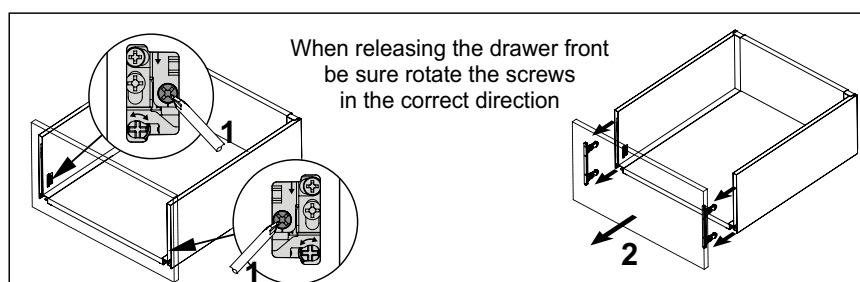
Overlay drawer fronts



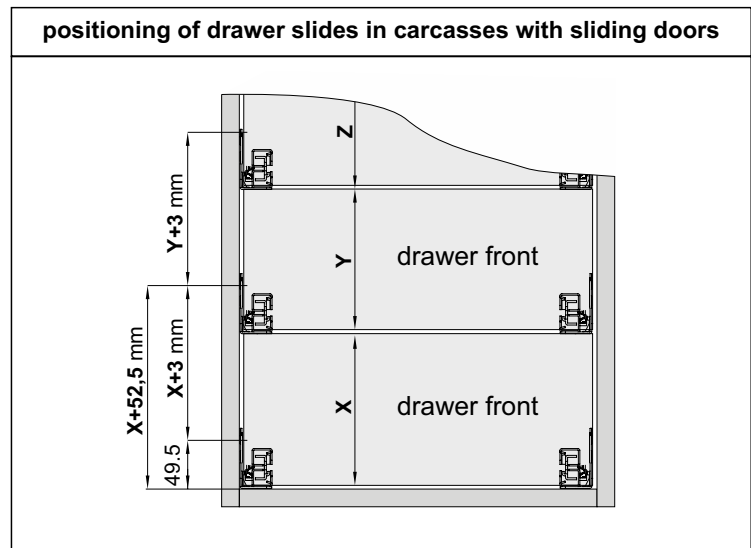
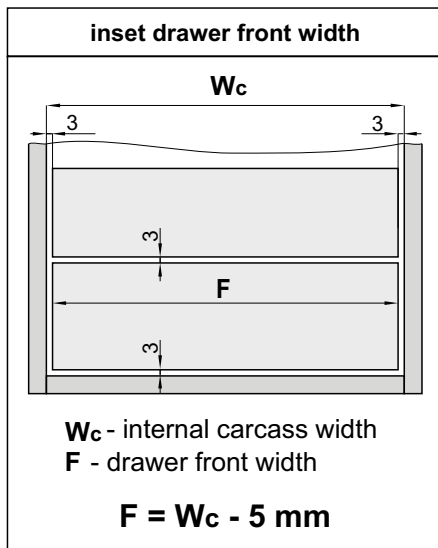
Positioning of holes for drawer front mounts in the **bottom** drawer (holes D)



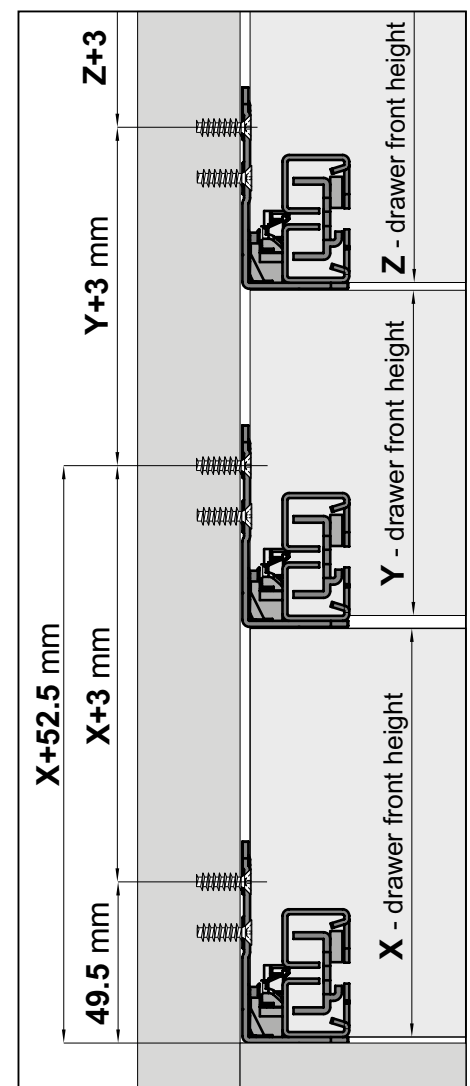
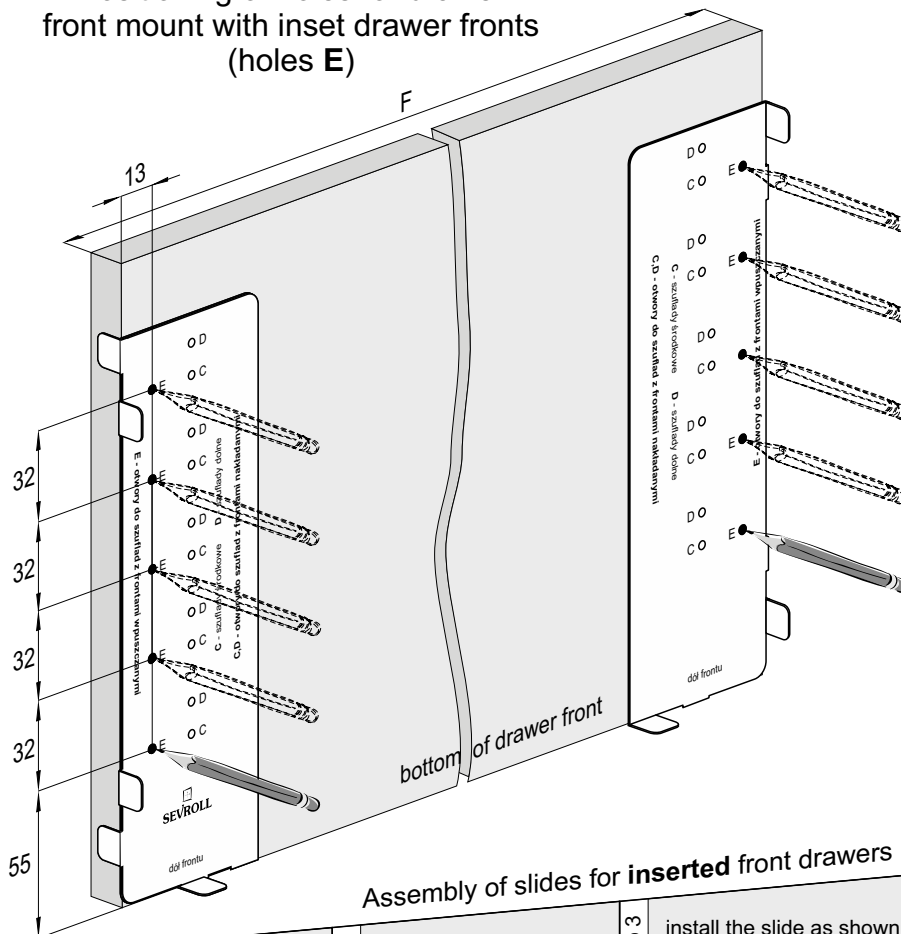
Positioning of holes for drawer front mounts in the **mid level** drawers (holes C)



Inset drawer fronts



Positioning of holes for drawer front mount with inset drawer fronts (holes **E**)

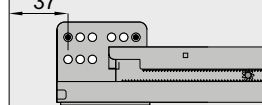
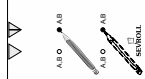


Assembly of slides for **inserted** front drawers

step 1 decide the height that the slide will be mounted

step 2 apply our template at the specified height and mark the holes

install the slide as shown
in the drawing below

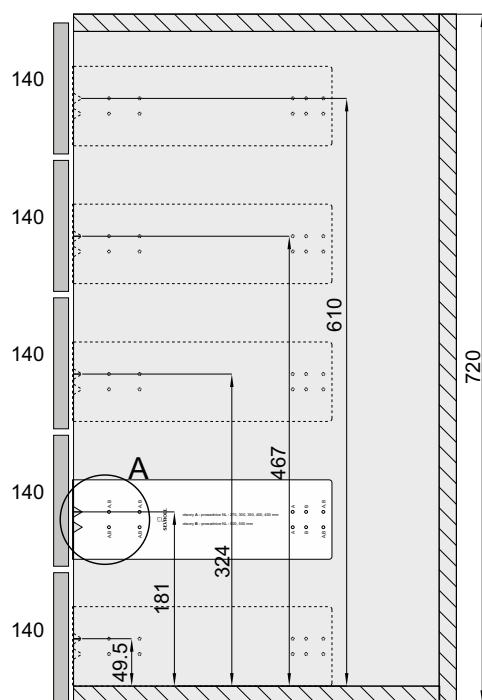




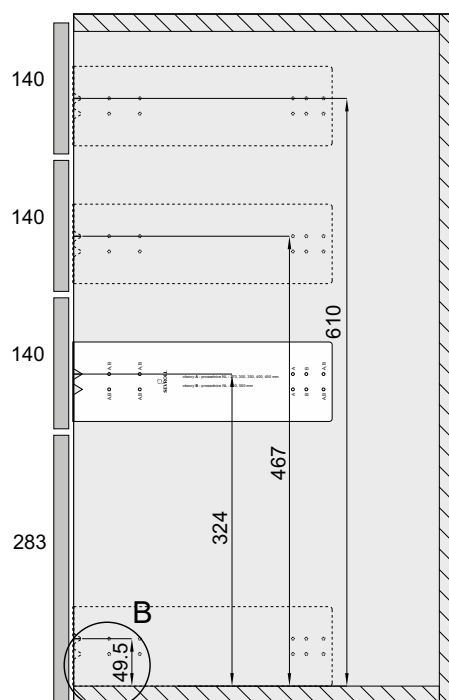
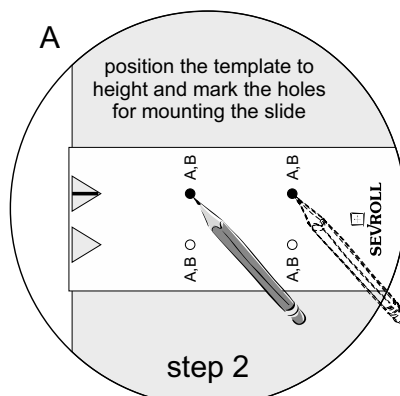
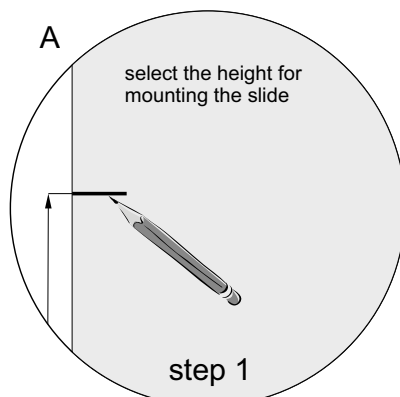
SEVROLLBOX SLIM II TEMPLATE FOR SLIDES

Marking holes for attaching the slides to Sevrollbox Slim drawers
with **overlays** fronts

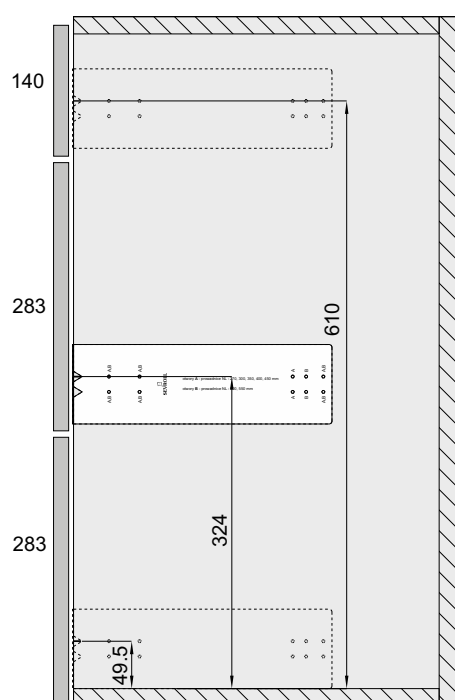
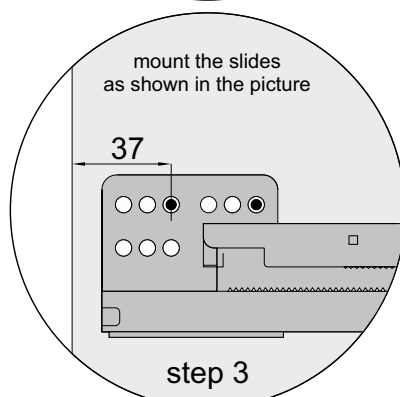
The height of Sevrollbox Slim slides in furniture carcasses (height 720 mm)
- 4 variants



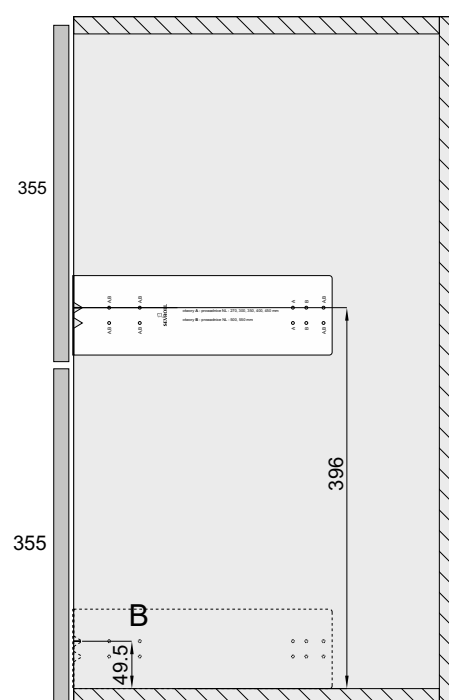
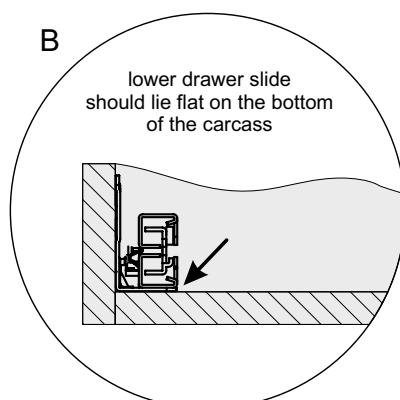
variant 1- x5



variant 2 - 3+1



variant 3 - 1+2

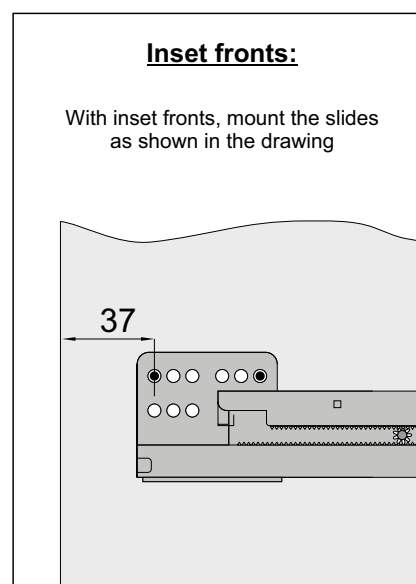
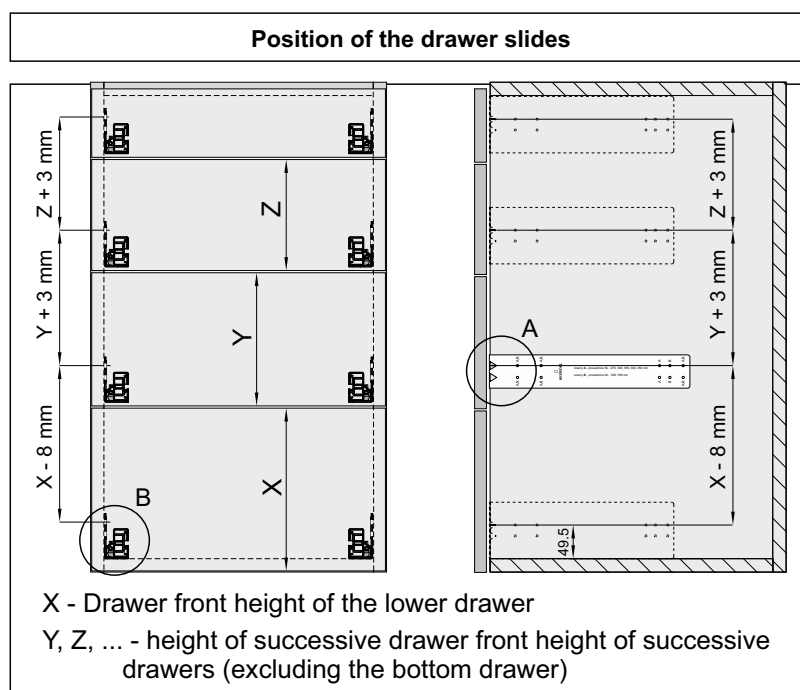
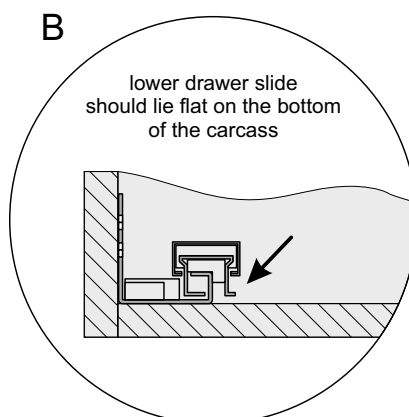
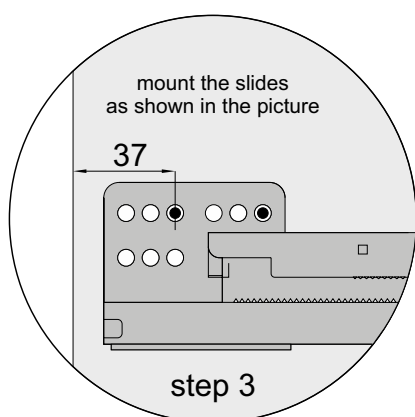
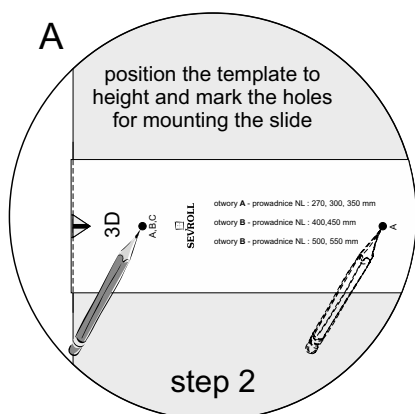
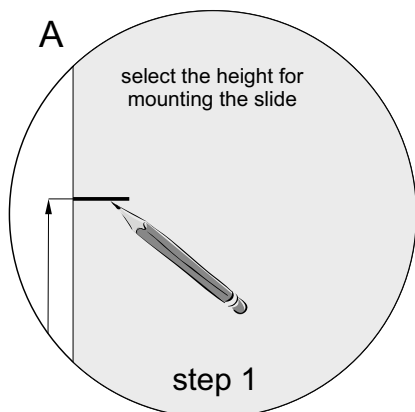


variant 4 - x2



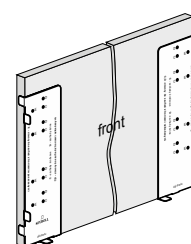
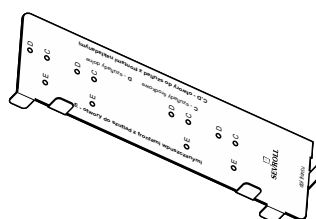
Marking holes for attaching the slides to Sevrollbox Slim drawers
with **overlays** fronts

Any height of carcass, quantity and drawer front height



Important information

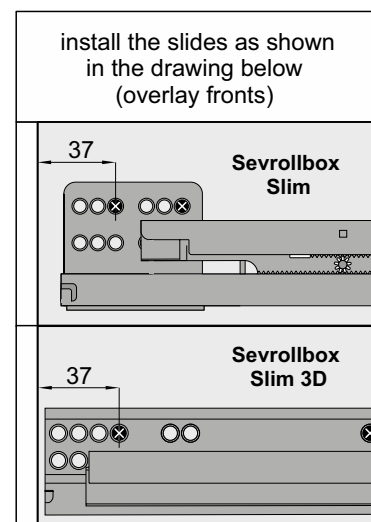
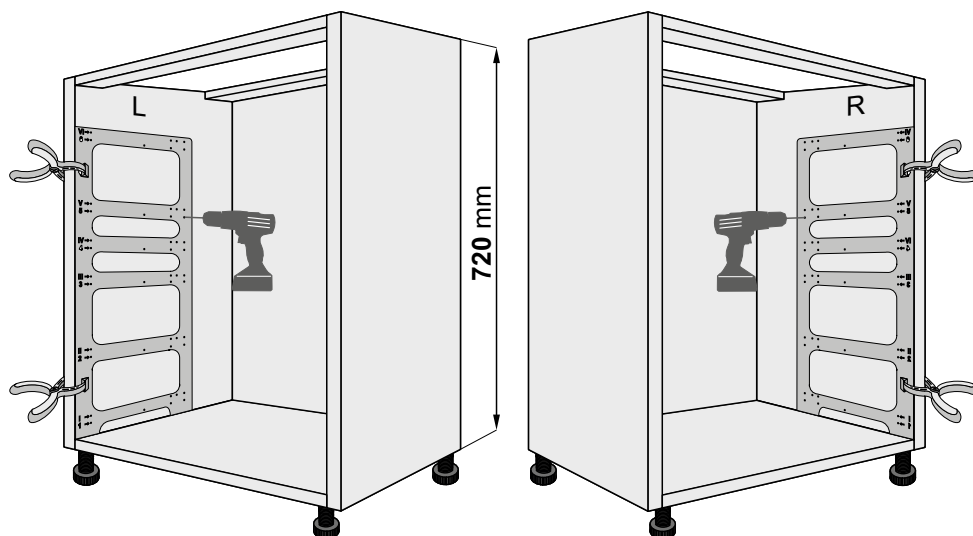
Sevroll's offer also includes the template Sevrollbox Slim for drawer fronts (**index: 05338**). This is used for marking the holes to mount drawer fronts to Sevrollbox Slim drawers.





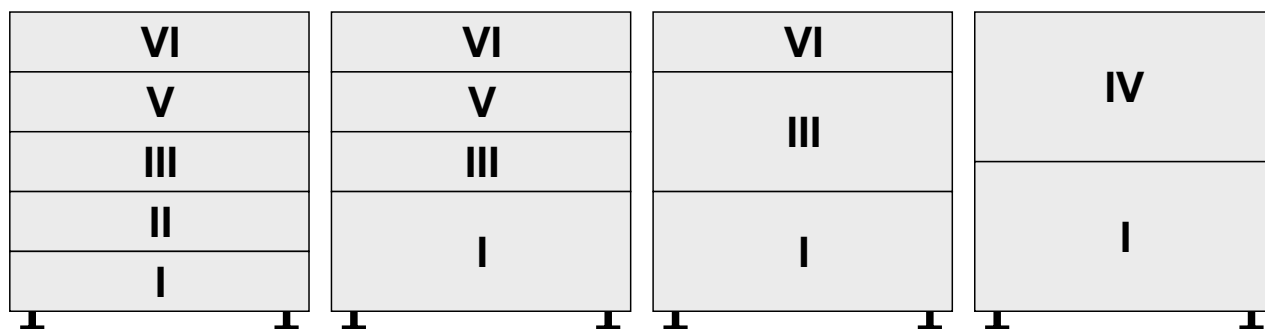
UNIVERSAL TEMPLATE FOR DRAWERS

SEVROLLBOX SLIM and SLIM 3D (INSTALLATION OF DRAWER SLIDES)

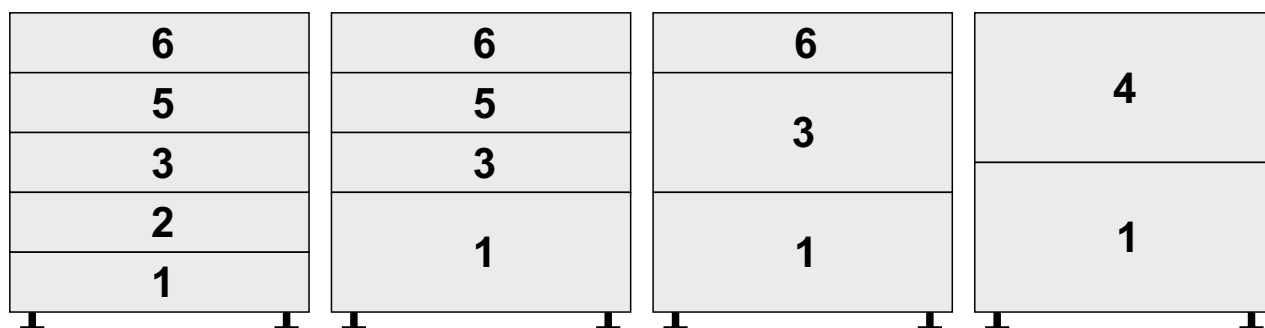


1. Template must be placed on the side of the frame as shown in the drawing (clamps can be used)
2. Depending on the position of the fronts, we drill holes for slide mounting in the suitable places on the template (drill $\varnothing 2.5$ mm)

Sevrollbox Slim drawers - use template holes in positions I-VI



Sevrollbox Slim 3D drawers - use template holes in places 1-6



Important information

Sevroll's offer also includes the template:

- Sevrollbox Slim for drawer fronts (Index: 05338)
- Sevrollbox Slim 3D for drawer fronts (Index: 06064)

This is used for marking the holes to mount drawer fronts to Sevrollbox Slim drawers.

